

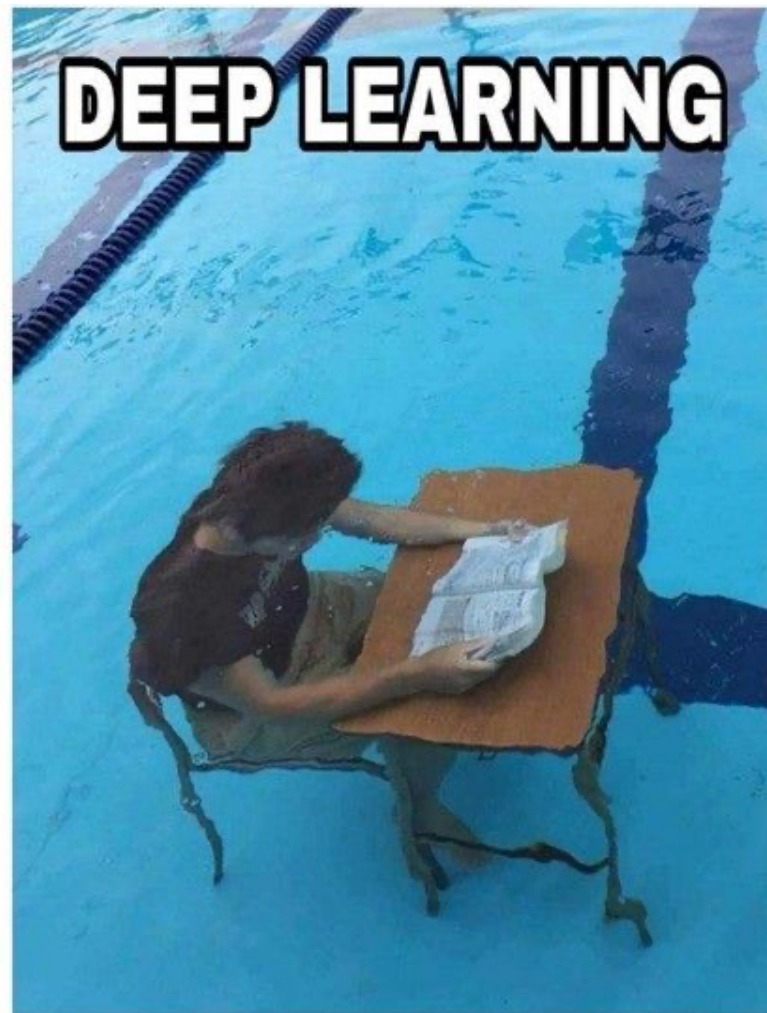
Mākslīgā intelekta testēšana

Dr. Evalds Urtans
evalds@asya.ai

Kas ir mākslīgais intelekts?



Kas ir mākslīgais intelekts?



Kas ir mākslīgais intelekts?

- **Linear algebra**
- **Calculus**
- **Probability theory**
- **Information theory**
- **10% programming**

$$i_t = \sigma(W_i * [\mathcal{X}_t, \mathcal{H}_{t-1}] + b_i)$$

$$f_t = \sigma(W_f * [\mathcal{X}_t, \mathcal{H}_{t-1}] + b_f)$$

$$e_{t,z} = V_e \cdot \tanh(W_e * [\mathcal{X}_{t,z}, \mathcal{H}_{t-1}] + b_e)$$

$$\alpha_{t,z} = \frac{\exp(e_{t,z})}{\sum_{j=1}^{\tau} \exp(e_{t,j})}$$

$$p_t = \sum_{j=1}^{\tau} \alpha_{t,j} \tilde{\mathcal{X}}_{t,j}$$

$$n_t = \sigma(W_n * [\mathcal{X}_t, \mathcal{H}_{t-1}] + b_n)$$

$$g_t = \tanh(W_g * [p_t, \mathcal{H}_{t-1}] + b_g)$$

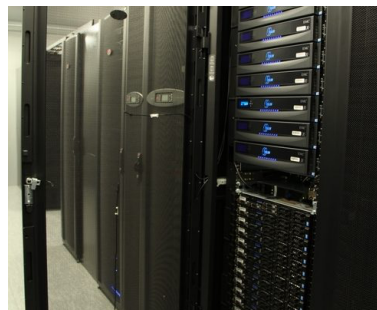
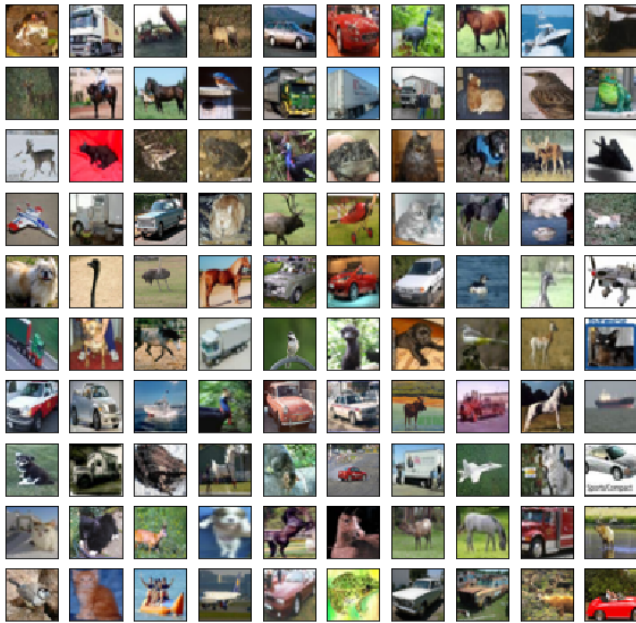
$$\mathcal{C}_t = f_t \circ \mathcal{C}_{t-1} + i_t \circ a_t + n_t \circ g_t$$

$$a_t = \tanh(W_a * [\mathcal{X}_t, \mathcal{H}_{t-1}] + b_a)$$

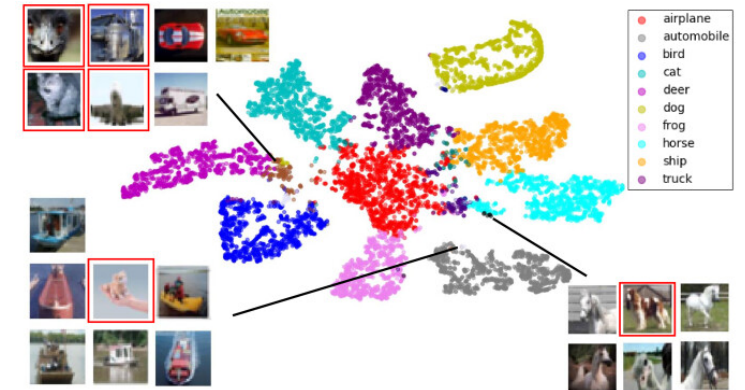
$$o_t = \sigma(W_o * [\mathcal{X}_t, \mathcal{H}_{t-1}] + b_o)$$

$$\mathcal{H}_t = o_t \circ \tanh(\mathcal{C}_t)$$

Kas ir mākslīgais intelekts?



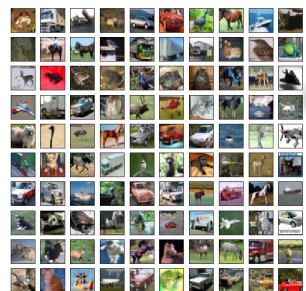
$$\begin{aligned}i_t &= \sigma(W_i * [\mathcal{X}_t, \mathcal{H}_{t-1}] + b_i) \\f_t &= \sigma(W_f * [\mathcal{X}_t, \mathcal{H}_{t-1}] + b_f) \\e_{t,z} &= V_e \cdot \tanh(W_e * [\mathcal{X}_{t,z}, \mathcal{H}_{t-1}] + b_e) \\ \alpha_{t,z} &= \frac{\exp(e_{t,z})}{\sum_{j=1}^{\tau} \exp(e_{t,j})} \\p_t &= \sum_{j=1}^{\tau} \alpha_{t,j} \tilde{\mathcal{X}}_{t,j} \\n_t &= \sigma(W_n * [\mathcal{X}_t, \mathcal{H}_{t-1}] + b_n) \\g_t &= \tanh(W_g * [p_t, \mathcal{H}_{t-1}] + b_g) \\C_t &= f_t \circ C_{t-1} + i_t \circ a_t + n_t \circ g_t \\a_t &= \tanh(W_a * [\mathcal{X}_t, \mathcal{H}_{t-1}] + b_a) \\o_t &= \sigma(W_o * [\mathcal{X}_t, \mathcal{H}_{t-1}] + b_o) \\\mathcal{H}_t &= o_t \circ \tanh(C_t)\end{aligned}$$



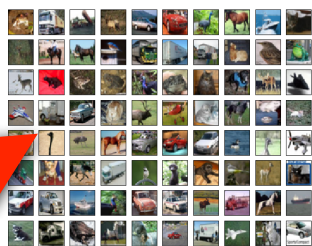
Apmācības process



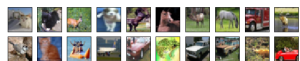
Datu kopa
min 50k
paraugu



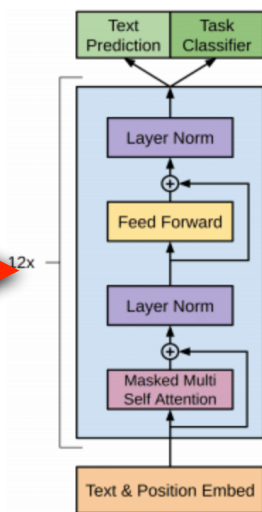
Apmācību
kopa



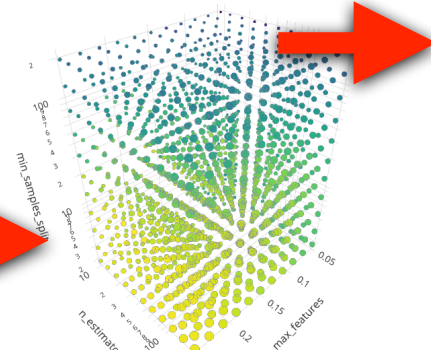
Testa
kopa



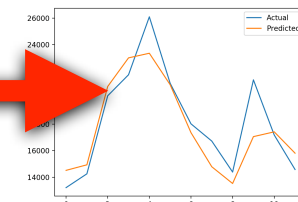
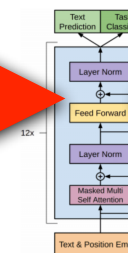
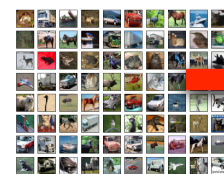
Modeļa
arhitektūra



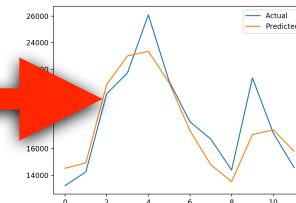
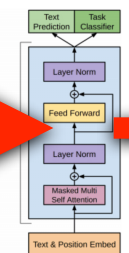
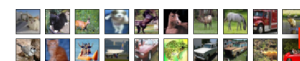
H-parametru
pārmeklēšana



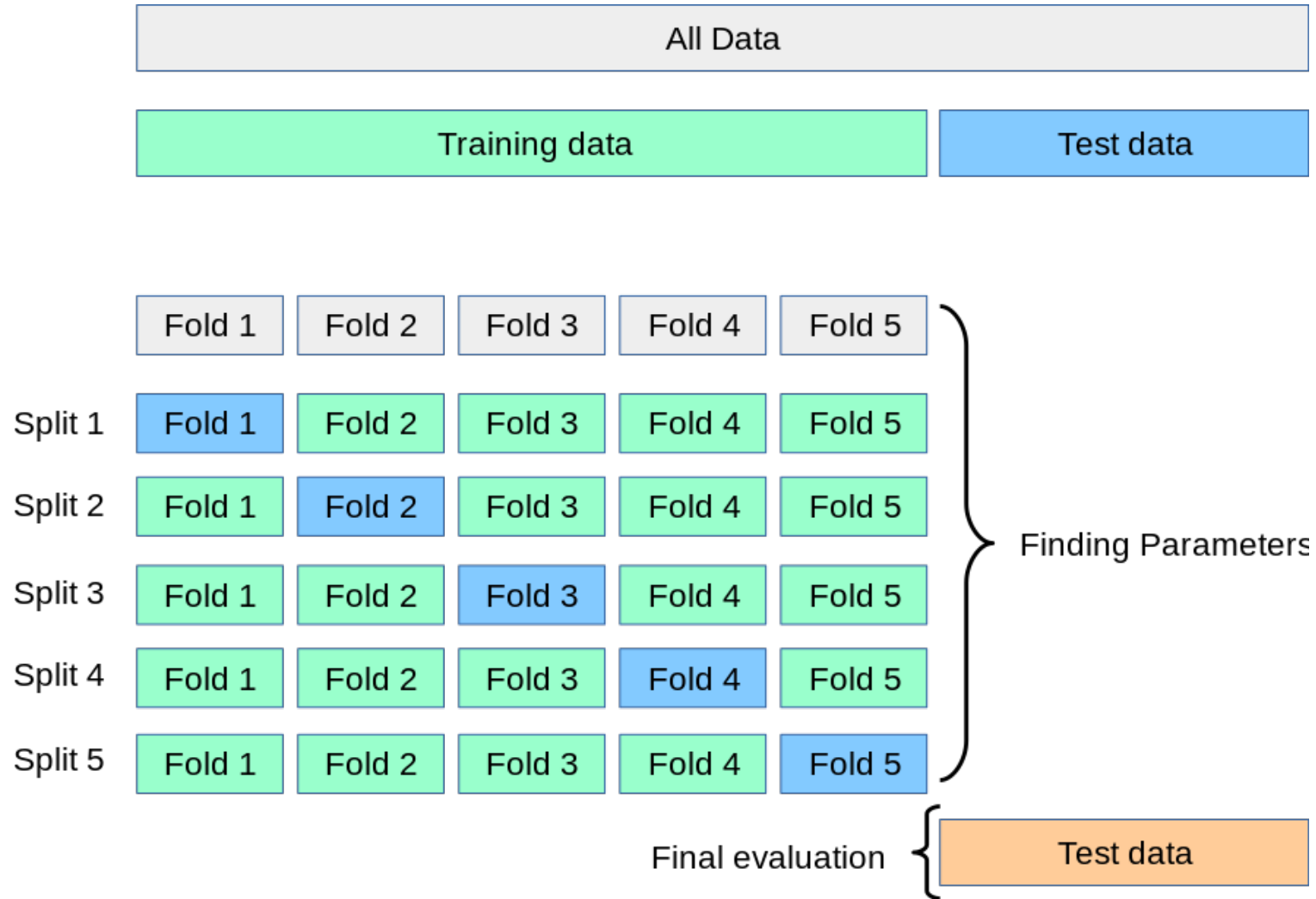
Apmācība -
Epoha



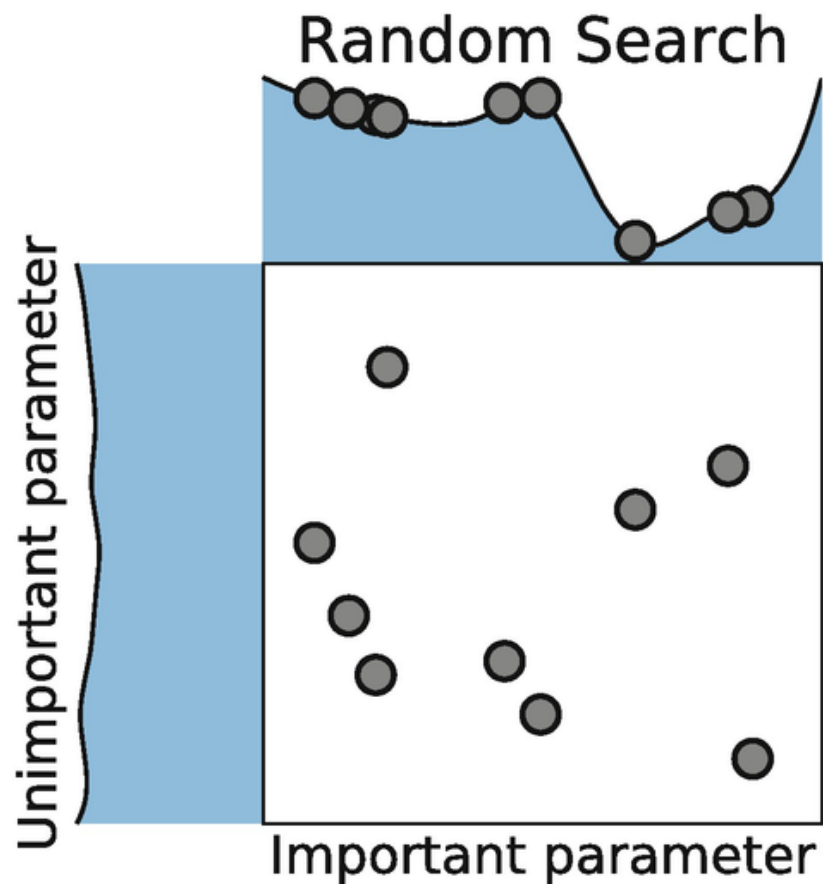
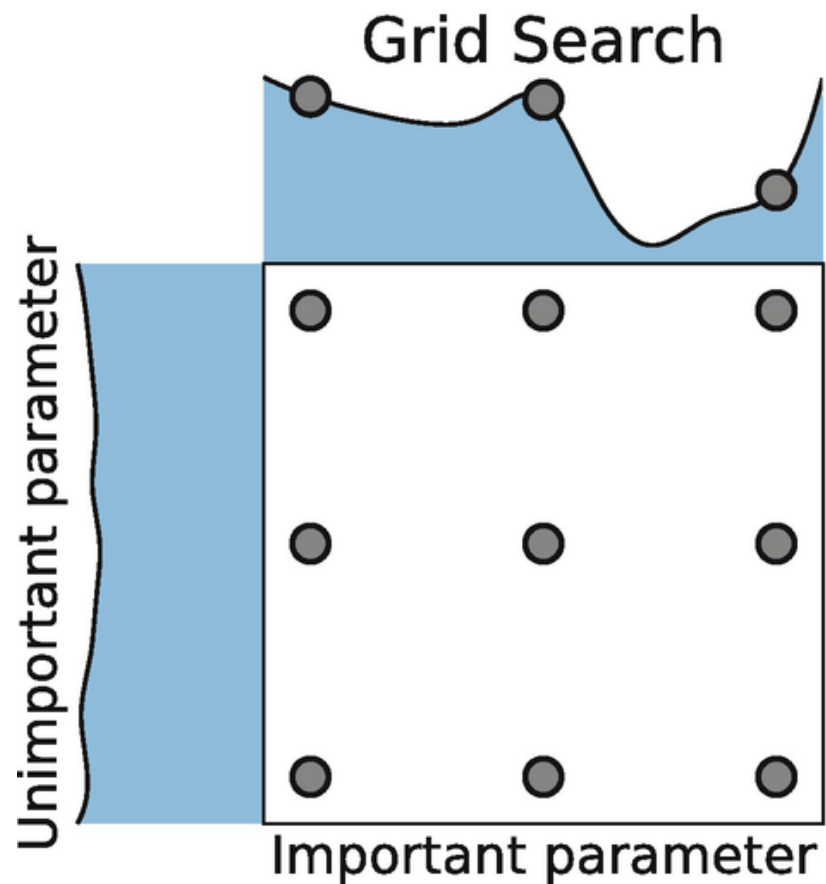
Validācija



Validācijas datu kopa

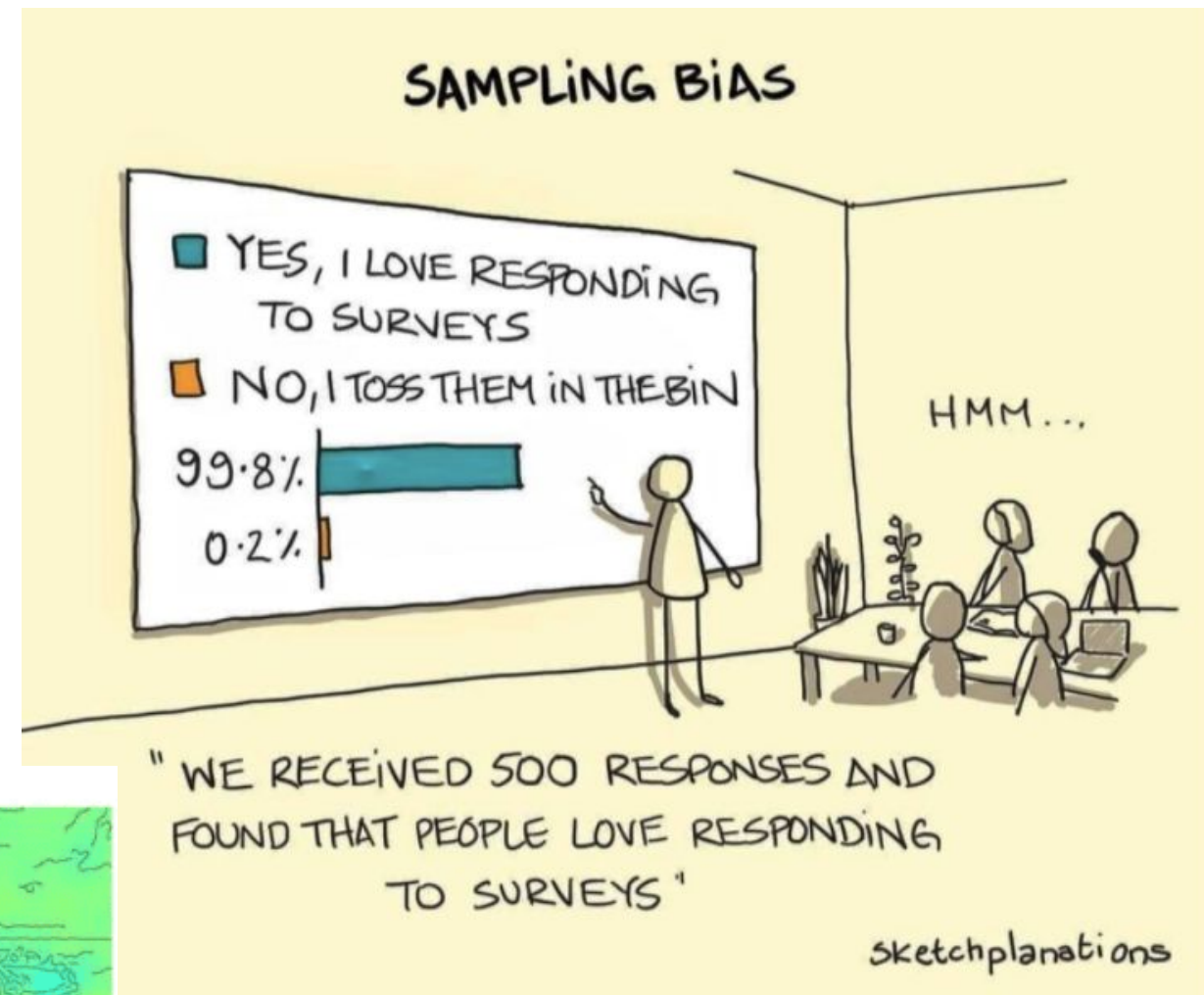


Hiper parametru pārmeklēšana

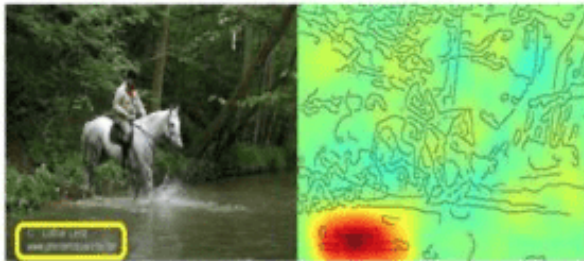


Datu problēmas

- Datu noslieces
- Datu tīrība



Horse-picture from Pascal VOC data set

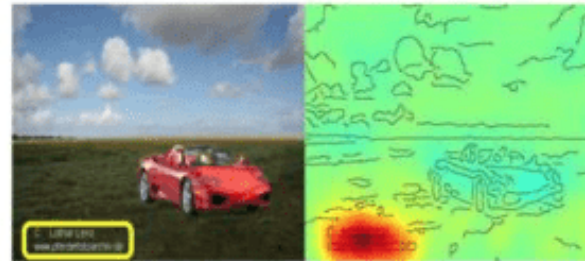


Source tag present



Classified as horse

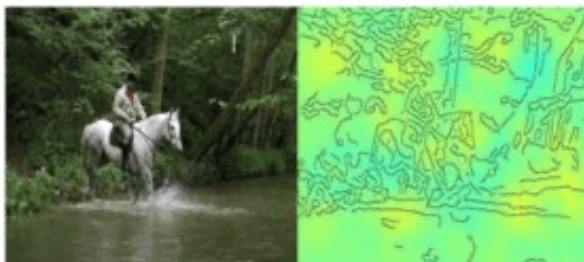
Artificial picture of a car



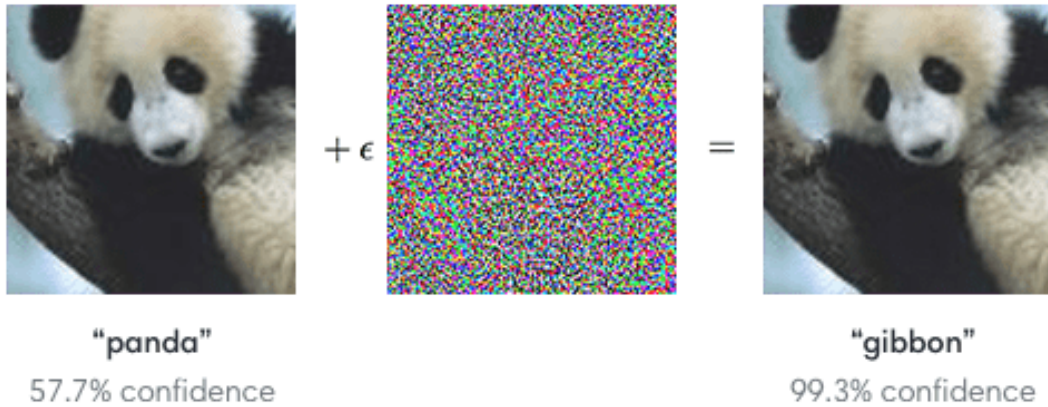
No source tag present



Not classified as horse



Modeļu problēmas



task: slightly changes

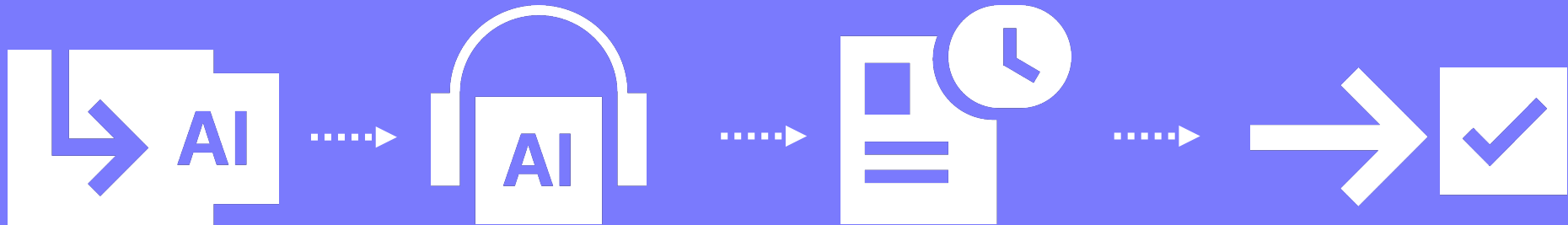
neural network:



Manuāls process



Automatizēts process



Video vai audio zvans savinojas ar CRM

Visi zvani tiek analizēti

Svarīgiem zvaniem tiek pielikts karodziņš. **letaupam laiku.**

Personalizēta apmācība **iegūstam nomērāmi labākus rādītājus.**

Apazīstam soft-skills

AGENT	CALLS	SPH	CLOSED SALES	TALKING	POSITIVITY	PATIENCE	TALKING PACE	PATIENCE
Robert A.								
James W.	35	3	21%	39%	41%	60%	145wpm	91%
Michael S.								



Performance

Check the performance of the whole sales team at one glance.



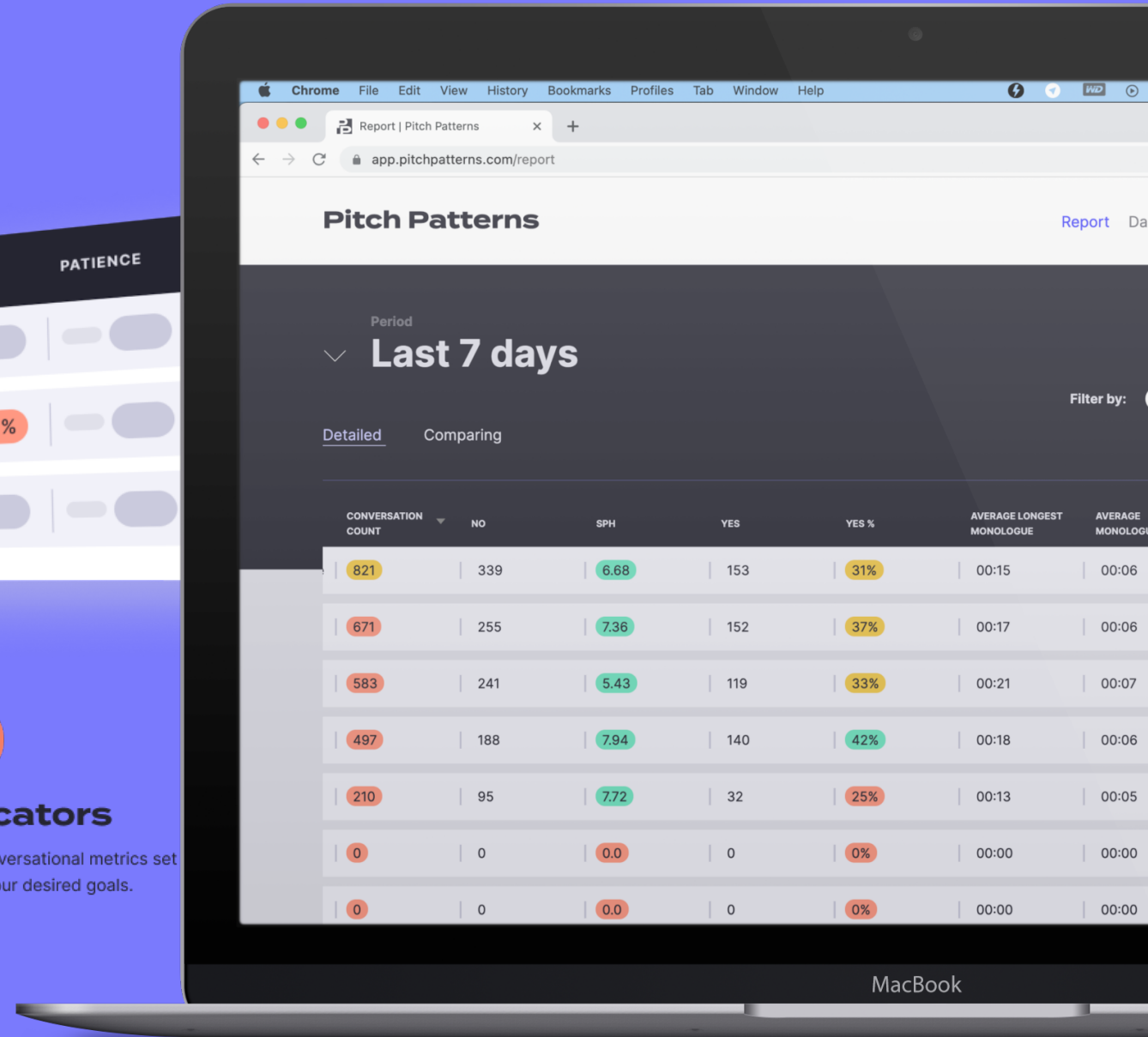
Metrics

Check different type of key conversational metrics to find out what drives sales.

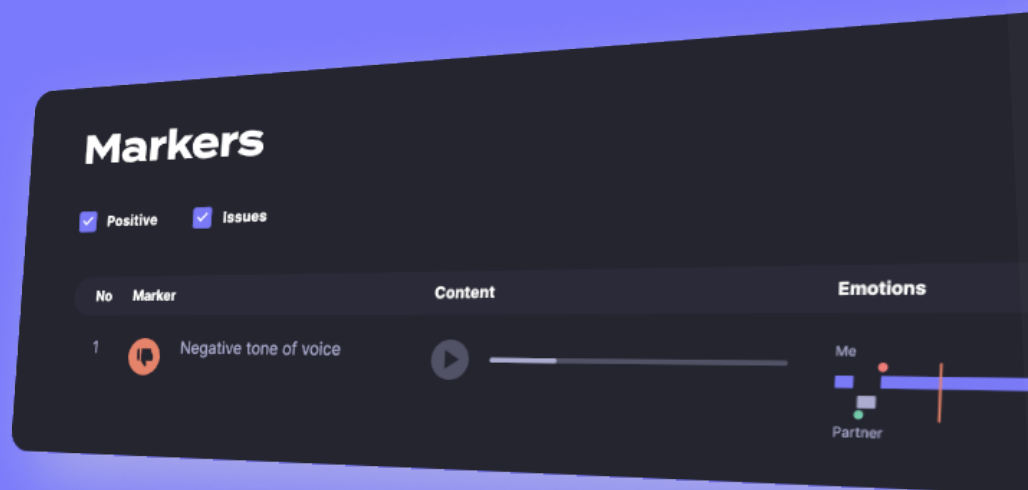


Indicators

Track conversational metrics set against your desired goals.



Atpazīstam hard-skills



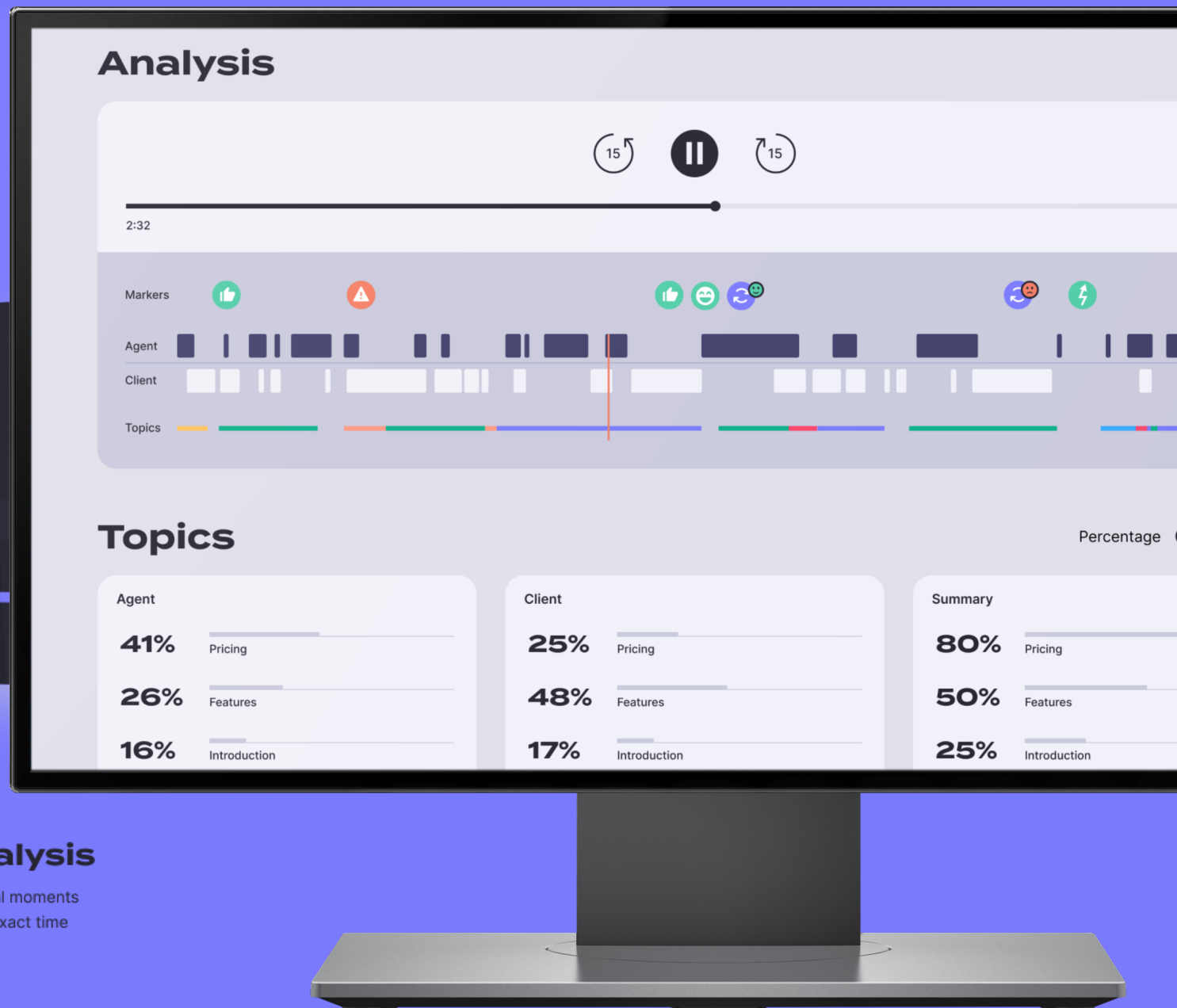
Markers

See issues automatically marked.
Save time by knowing where to focus attention first.



Meta analysis

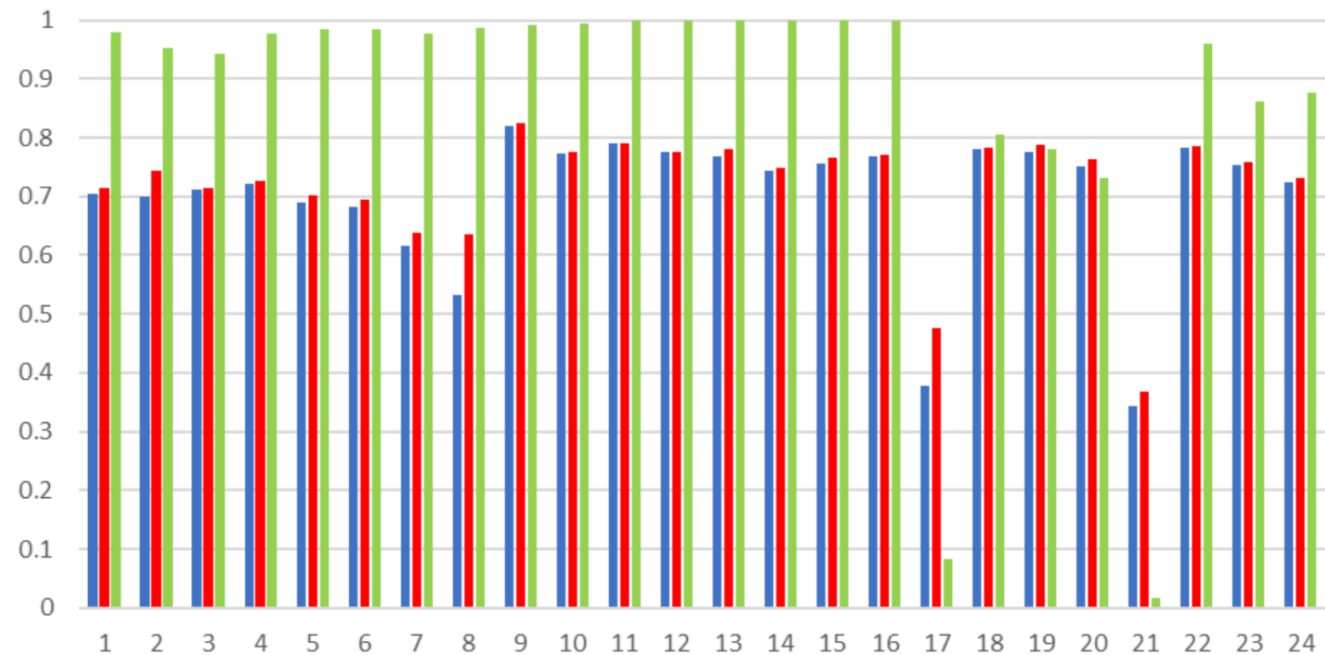
See which emotional moments happened at what exact time moments.



Sentimenta analīze ar ChatGPT

What is the general sentiment of this sentence? Choose one of the following: Positive, Negative, or Neutral.	79.0%
How would you describe the author's overall mood or attitude in this text? Choose one of the following: Positive, Negative, or Neutral.	77.4%
What is your overall impression of the sentiment in this sentence? Choose one of the following: Positive, Negative, or Neutral.	76.8%
Kāda ir šī teksta emocionālā nokrāsa? Izvēlies vienu no: Pozitīva, Negatīva vai Neitrāla.	74,3%
Pamatojoties uz teksta toni, kāds iespaids par to rodas? Izvēlies vienu no: Pozitīva, Negatīva vai Neitrāla.	75,6%

Vaicājumu rezultāti



Datu kopa	LVM Vaicājums	OM leksikona rezultāti
LVReddit	70,4%*	43,0%*
latvian-tweet-sentiment-corpus	82,0%	60,4%
LV-twitter-sentiment-corpus	62,2%	53,4%
Latvian Twitter Eater Corpus validācijas kopa	65,1%	49,7%

Gatavie riki - ChatGPT tipa

Search engines:

- perplexity.ai
- chat.you.com
- chat.bing.com

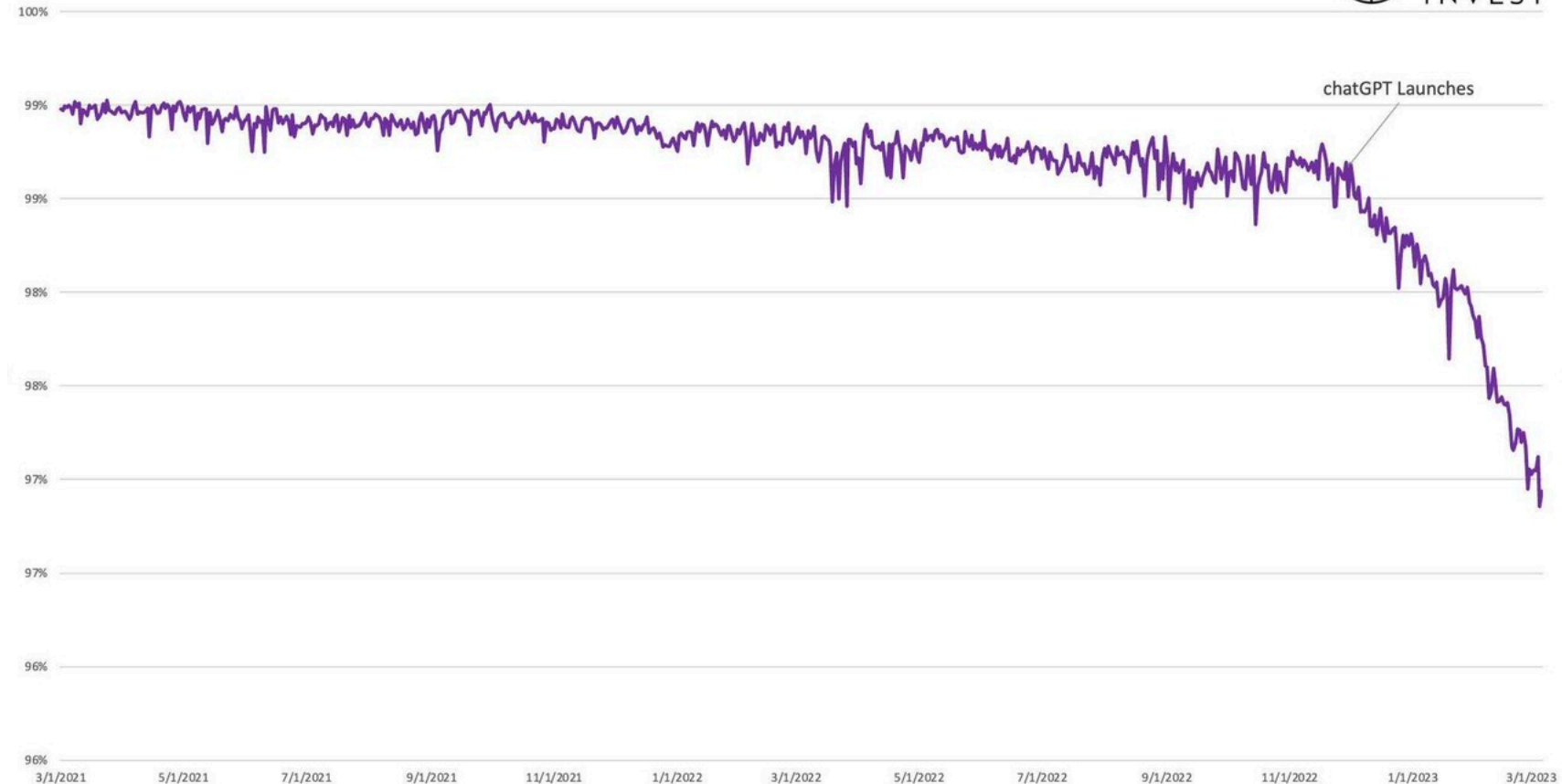
Productivity:

- chatpdf.com

Content:

- jasper.ai
- writesonic.ai
- chat.openai.com

Google traffic share vs Bing + chatGPT



Source: ARK Invest, SimilarWeb

Citi nozīmīgi rīki

Text-to-Image:

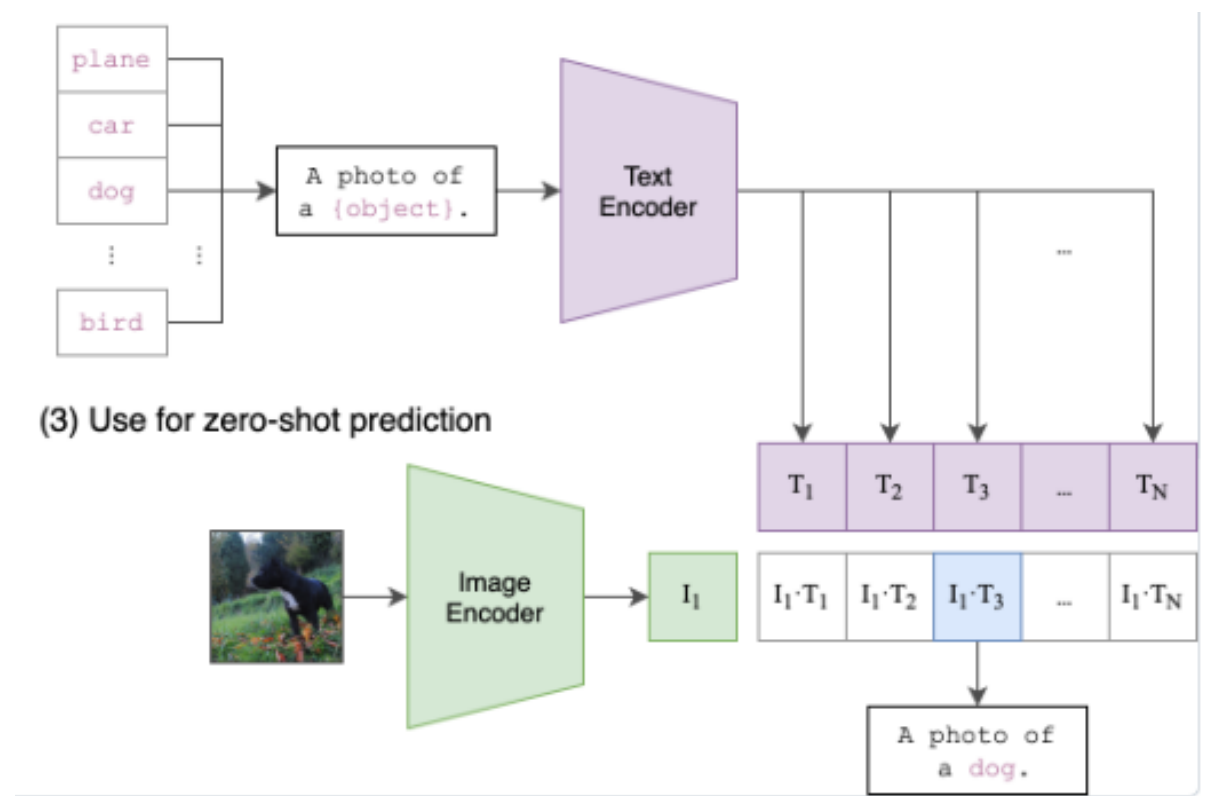
- Midjourney
- DALL-E
- Adobe Firefly
- StarryAI

Image-to-Text:

- CLIP

Podcasting:

- Adobe podcast (voice)
- nVidia Broadcast (eye)
- Synthesia AI (face)
- Resemble AI (voice)
- Sounddraw AI (music)



Citi nozīmīgi rīki

No-code apps:

- [webflow.com](https://www.webflow.com),
- bubble.io
- elementor.com
- **Adalo**
- **Appy Pie**
- **Buildfire**
- **Builder.ai**

The screenshot displays the Bubble.io no-code app builder interface. At the top, the page is identified as 'index' and a button labeled 'Button Submit Now!' is visible. The left sidebar contains navigation options: Design (selected), Workflow, Data, Styles, Plugins, Settings, and Logs. The main design area shows a canvas with a large heading 'A Bubble App', a text input field with the placeholder 'Tell me something...', and a blue 'Submit Now!' button. A context menu is open over the 'Submit Now!' button, showing options: 'Fixed width' (checked), 'Fixed margin', 'Add hiding rule', 'Wrap to previous line if the page is stretched', 'Edit Button Submit Now!...', and 'Select parent'. The right sidebar shows the 'UI Builder' and 'Responsive' tabs, with 'Current view' set to 'Use original width (1080px)'. Below this, the dimensions for the 'Page' (375px, 34%), 'Container' (375px), and 'Element' (150px, 100%) are listed. A 'Page states' section shows 'User logged out (toggle)'. A 'Watch Tutorial' button is also visible in the bottom right of the design area.



KEEP

CALM

THERE IS

AN APP

AI

FOR THAT

theresanaiforthat.com

asya

10+ zinātniskas publikācijas
10+ komerciāli AI projekti
4 mobīlās lietotnes
Apbalvoti UI un AI izstrādāji



Mākslīgā intelekta testēšana

Dr. Evalds Urtans
evalds@asya.ai