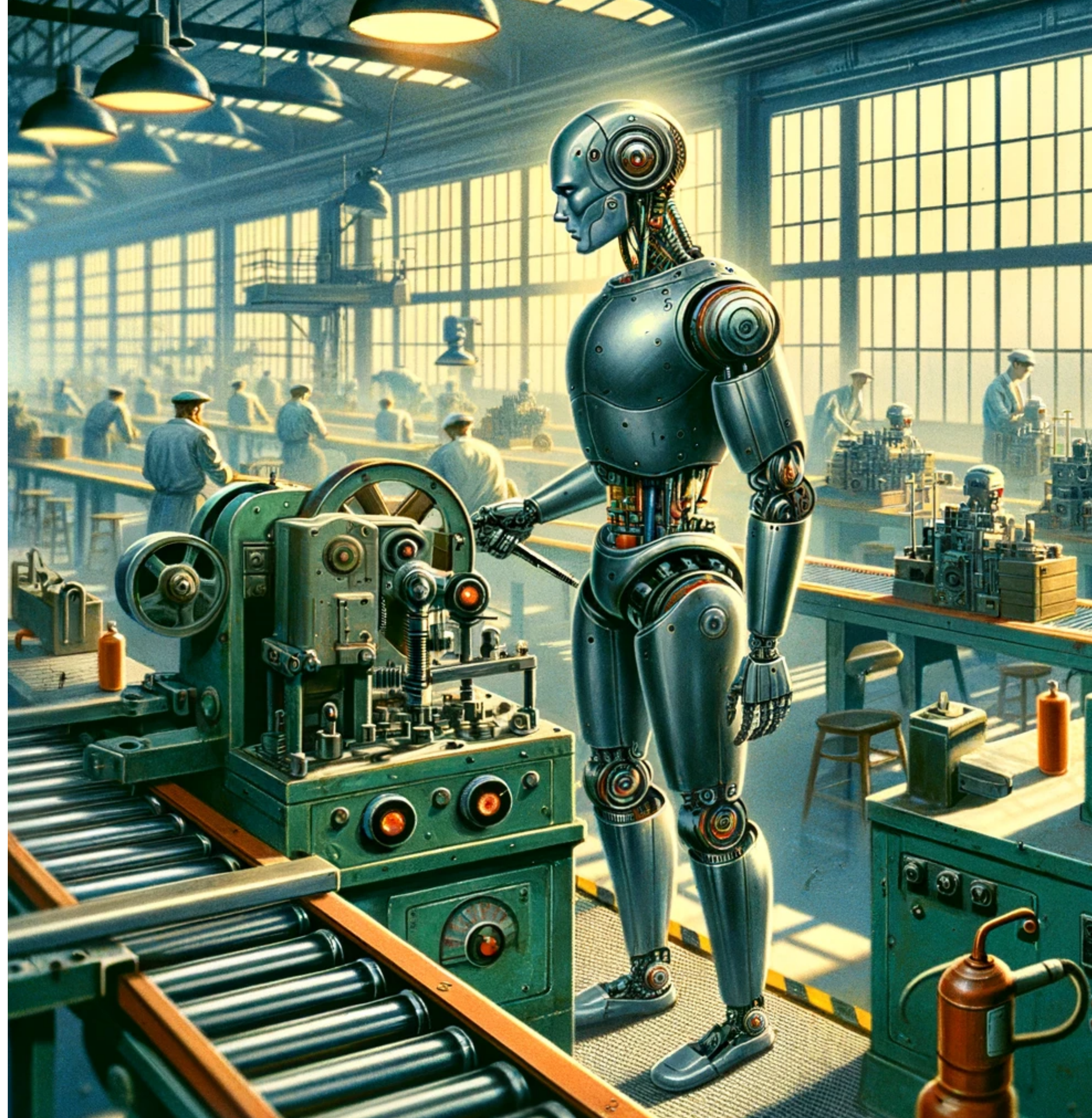


Mākslīgais intelekts un darbinieks – kurus darbus var nodot tehnoloģijām?

Dr. Evalds Urtans
evalds@asya.ai



Kas ir mākslīgais intelekts?

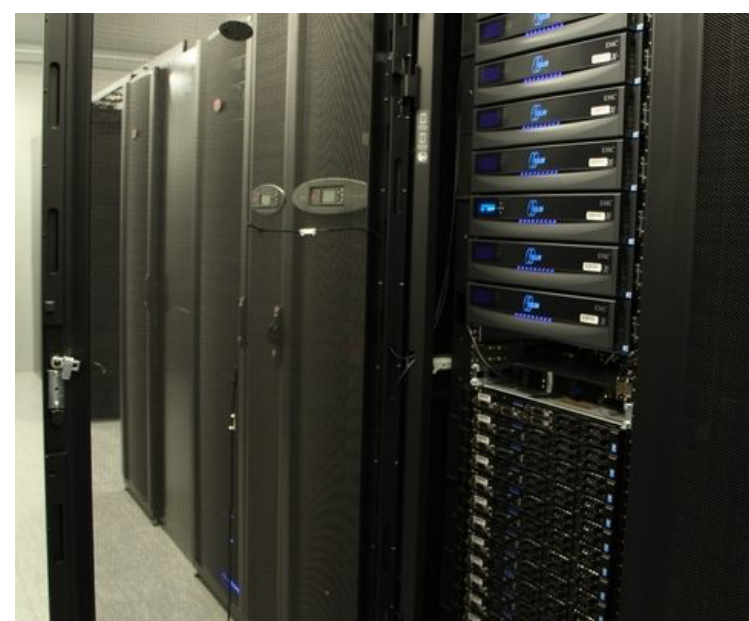
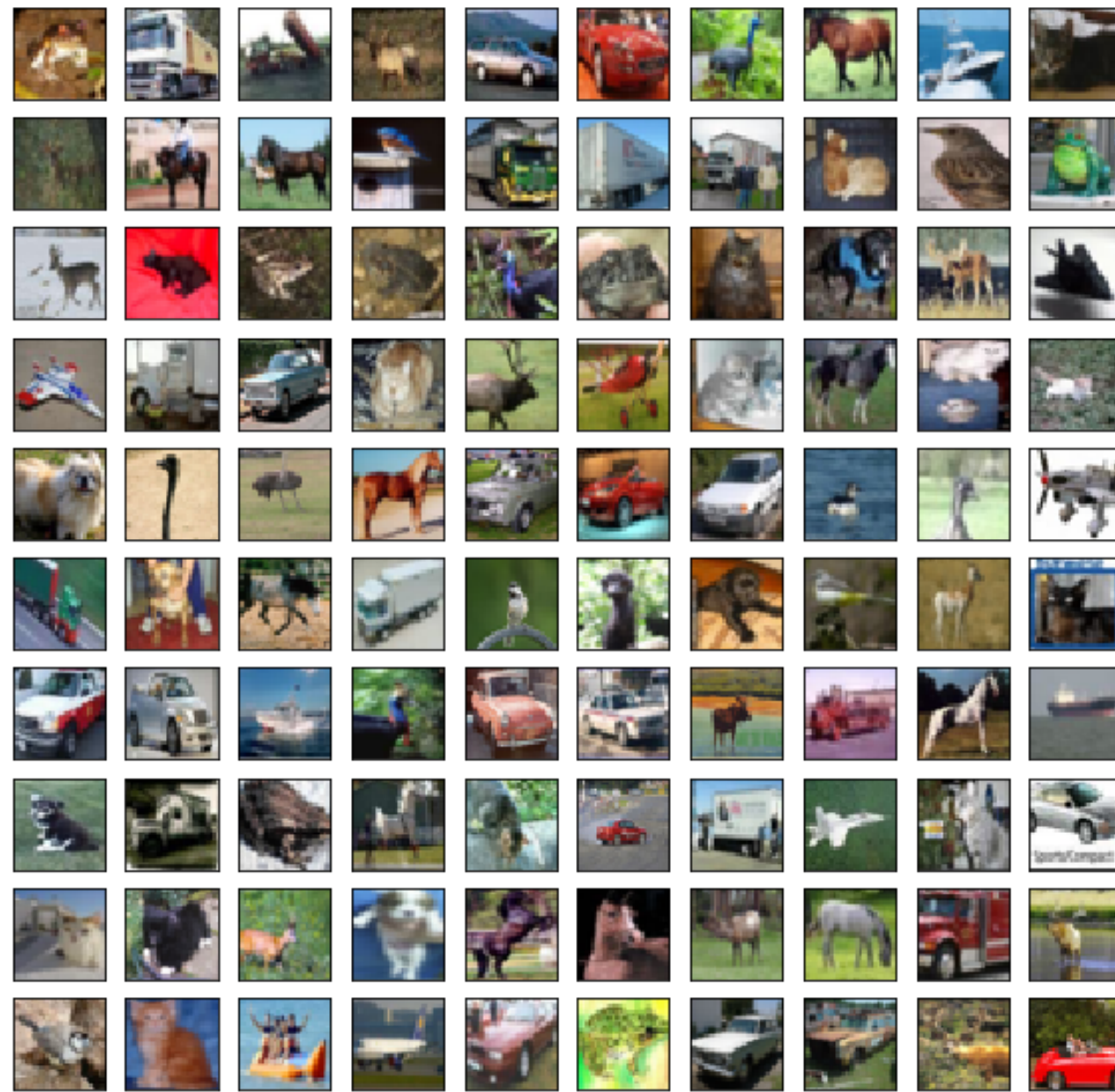


Kas ir mākslīgais intelekts?

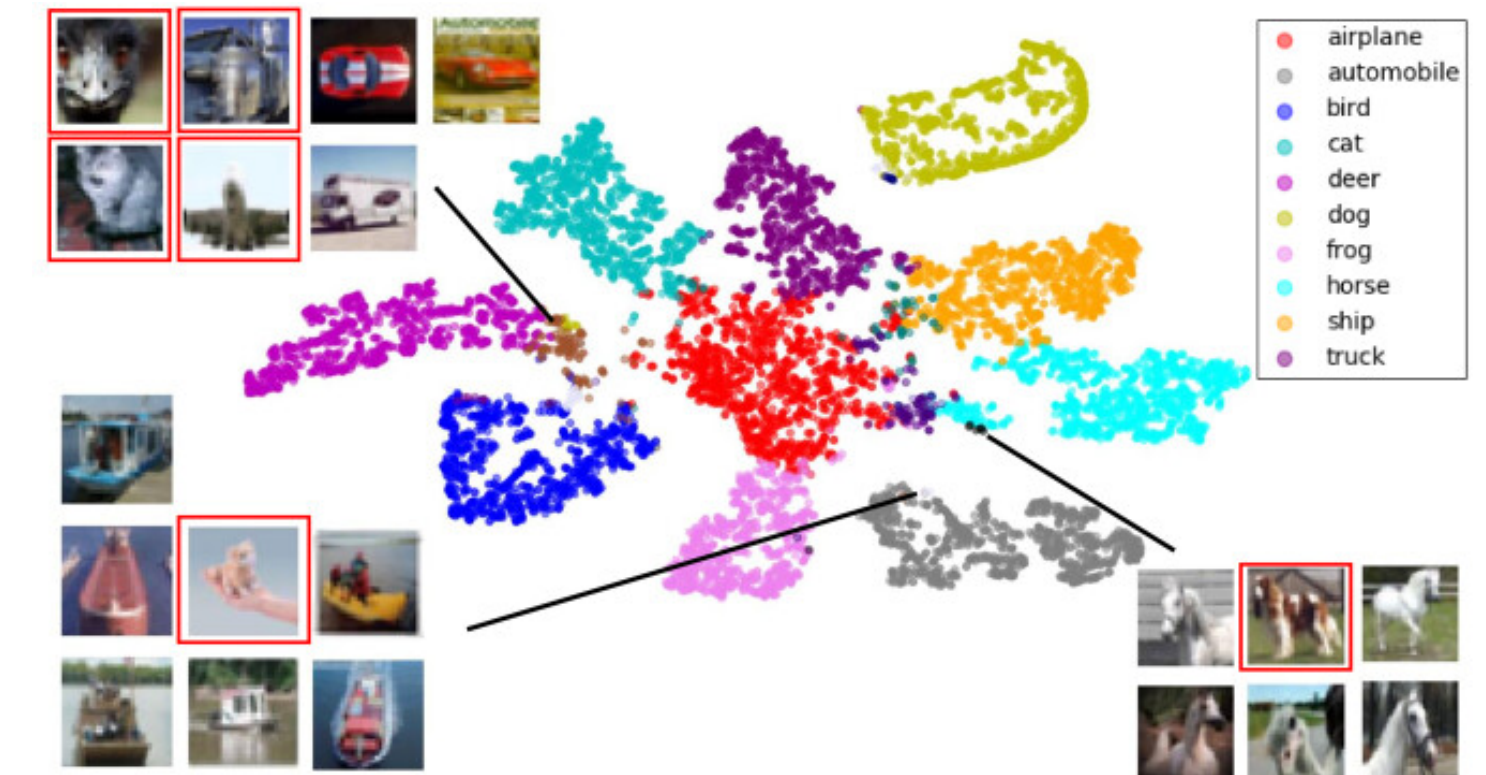
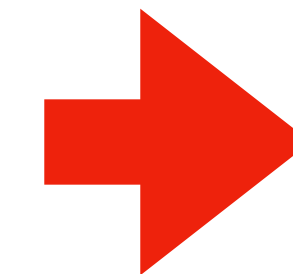


$$\begin{aligned}i_t &= \sigma(W_i * [\mathcal{X}_t, \mathcal{H}_{t-1}] + b_i) \\f_t &= \sigma(W_f * [\mathcal{X}_t, \mathcal{H}_{t-1}] + b_f) \\e_{t,z} &= V_e \cdot \tanh(W_e * [\mathcal{X}_{t,z}, \mathcal{H}_{t-1}] + b_e) \\\alpha_{t,z} &= \frac{\exp(e_{t,z})}{\sum_{j=1}^{\tau} \exp(e_{t,j})} \\p_t &= \sum_{j=1}^{\tau} \alpha_{t,j} \tilde{\mathcal{X}}_{t,j} \\n_t &= \sigma(W_n * [\mathcal{X}_t, \mathcal{H}_{t-1}] + b_n) \\g_t &= \tanh(W_g * [p_t, \mathcal{H}_{t-1}] + b_g) \\C_t &= f_t \circ C_{t-1} + i_t \circ a_t + n_t \circ g_t \\a_t &= \tanh(W_a * [\mathcal{X}_t, \mathcal{H}_{t-1}] + b_a) \\o_t &= \sigma(W_o * [\mathcal{X}_t, \mathcal{H}_{t-1}] + b_o) \\\mathcal{H}_t &= o_t \circ \tanh(C_t)\end{aligned}$$

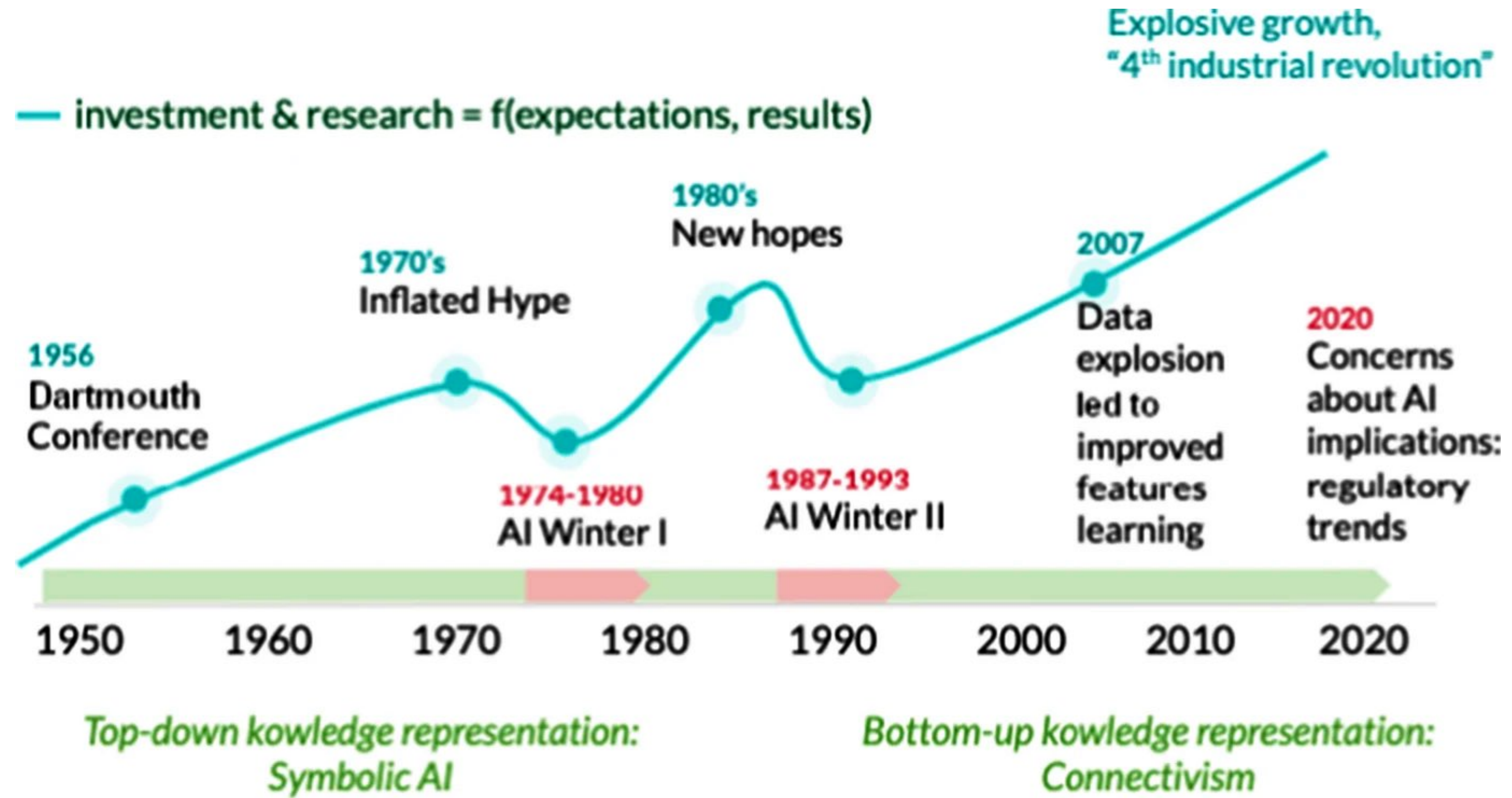
Kas ir mākslīgais intelekts?



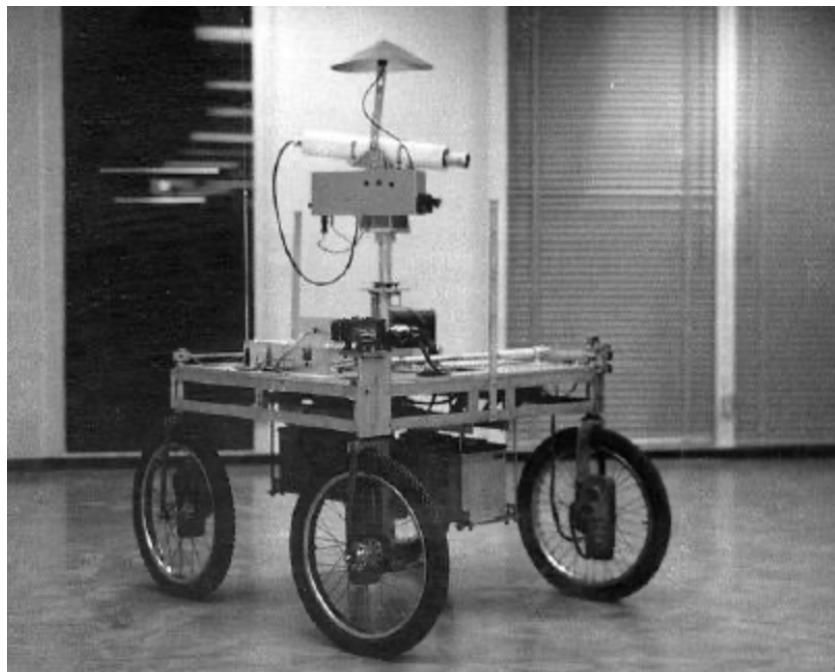
$$\begin{aligned}i_t &= \sigma(W_i * [\mathcal{X}_t, \mathcal{H}_{t-1}] + b_i) \\f_t &= \sigma(W_f * [\mathcal{X}_t, \mathcal{H}_{t-1}] + b_f) \\e_{t,z} &= V_e \cdot \tanh(W_e * [\mathcal{X}_{t,z}, \mathcal{H}_{t-1}] + b_e) \\\alpha_{t,z} &= \frac{\exp(e_{t,z})}{\sum_{j=1}^{\tau} \exp(e_{t,j})} \\p_t &= \sum_{j=1}^{\tau} \alpha_{t,j} \tilde{\mathcal{X}}_{t,j} \\n_t &= \sigma(W_n * [\mathcal{X}_t, \mathcal{H}_{t-1}] + b_n) \\g_t &= \tanh(W_g * [p_t, \mathcal{H}_{t-1}] + b_g) \\C_t &= f_t \circ C_{t-1} + i_t \circ a_t + n_t \circ g_t \\a_t &= \tanh(W_a * [\mathcal{X}_t, \mathcal{H}_{t-1}] + b_a) \\o_t &= \sigma(W_o * [\mathcal{X}_t, \mathcal{H}_{t-1}] + b_o) \\\mathcal{H}_t &= o_t \circ \tanh(C_t)\end{aligned}$$



Vēsture



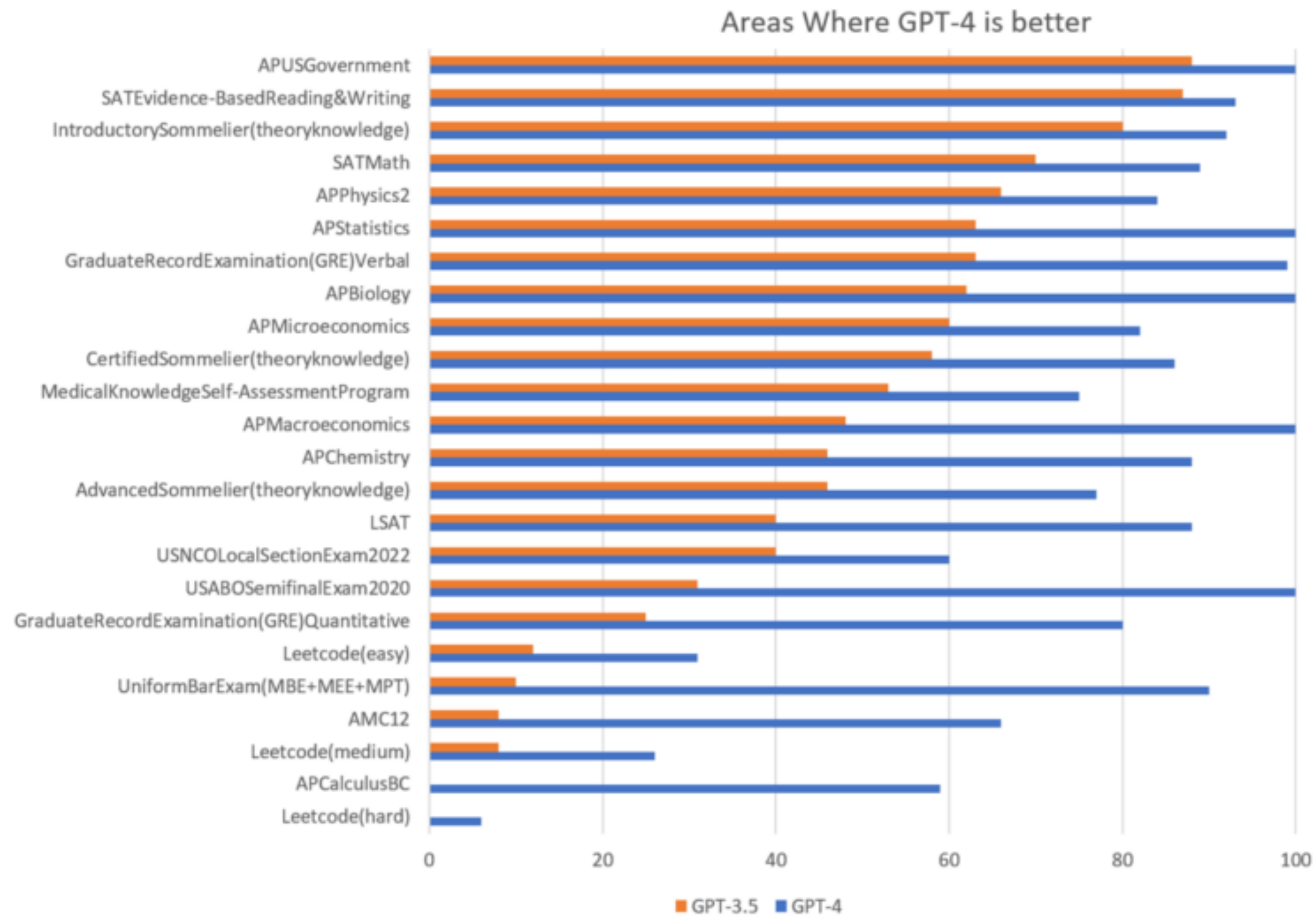
Hans Moravec's Robots,
1975



Tesla FSD,
2023

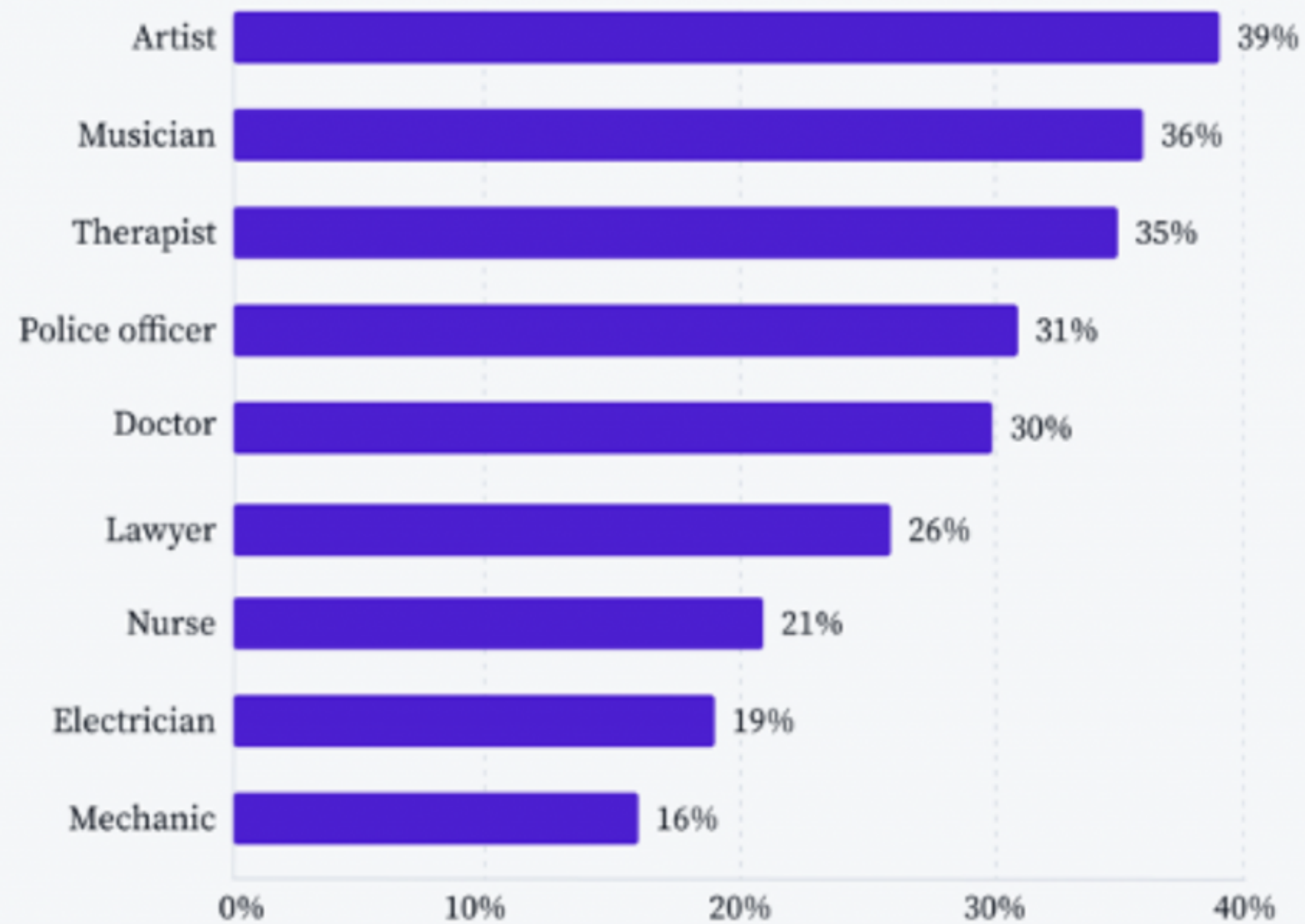


GPT-3.5 vs GPT-4

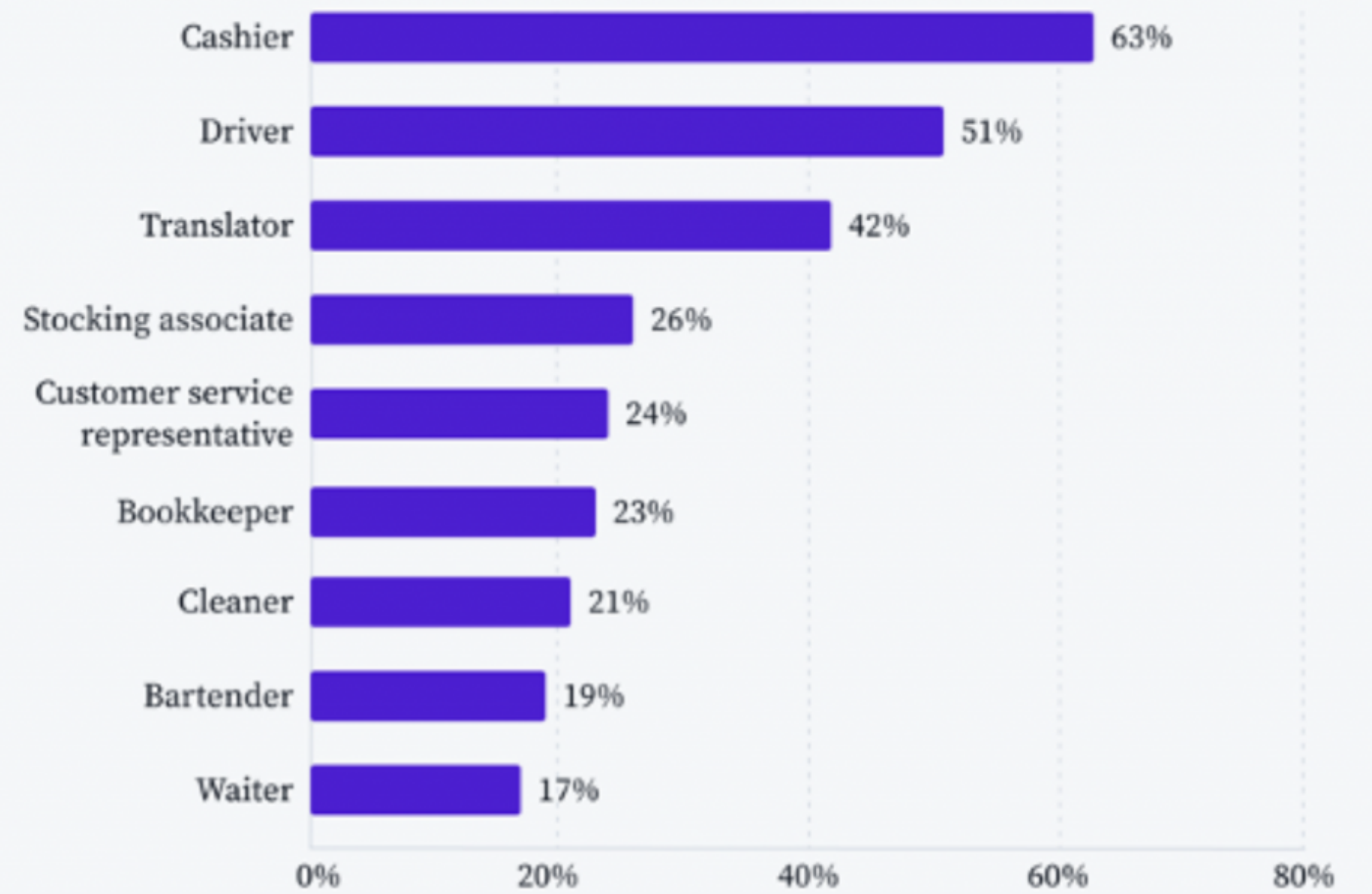


Pirms GenAI

Jobs least likely to be taken over by AI



Jobs most likely to be taken over by AI

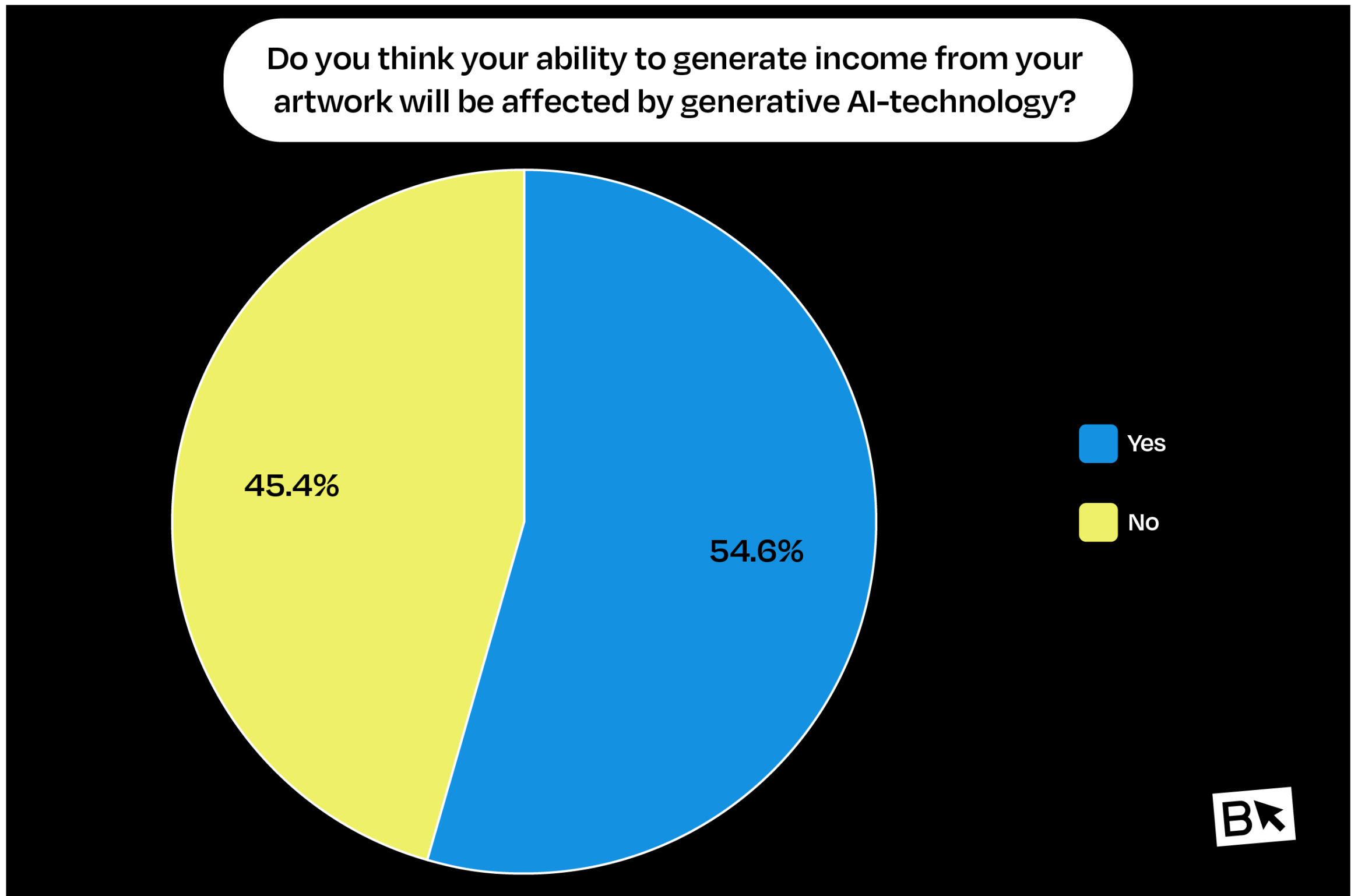


Pēc GenAI



Share of industry employment exposed to automation by AI, US (%)



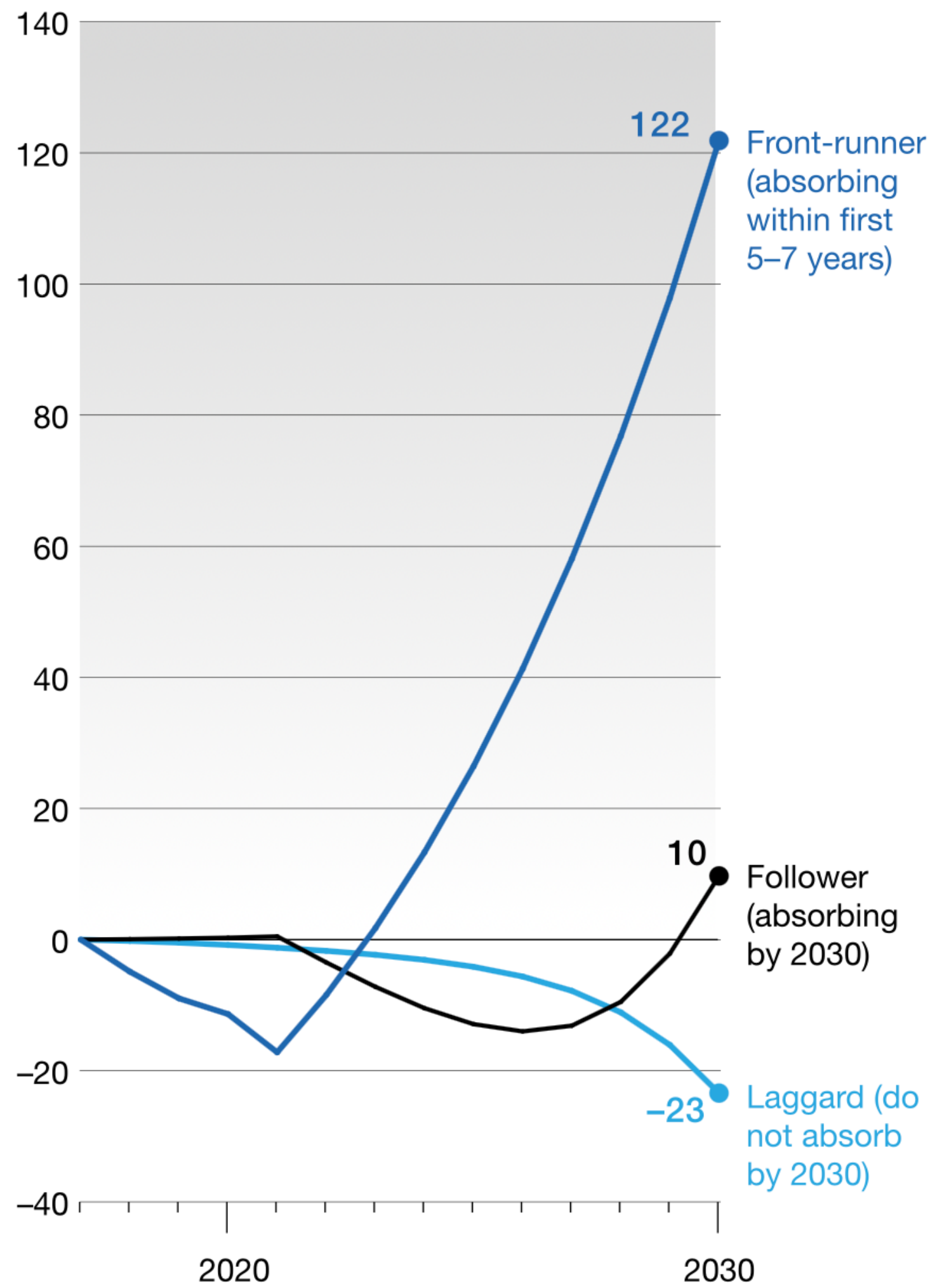
SOURCE: GOLDMAN SACHS



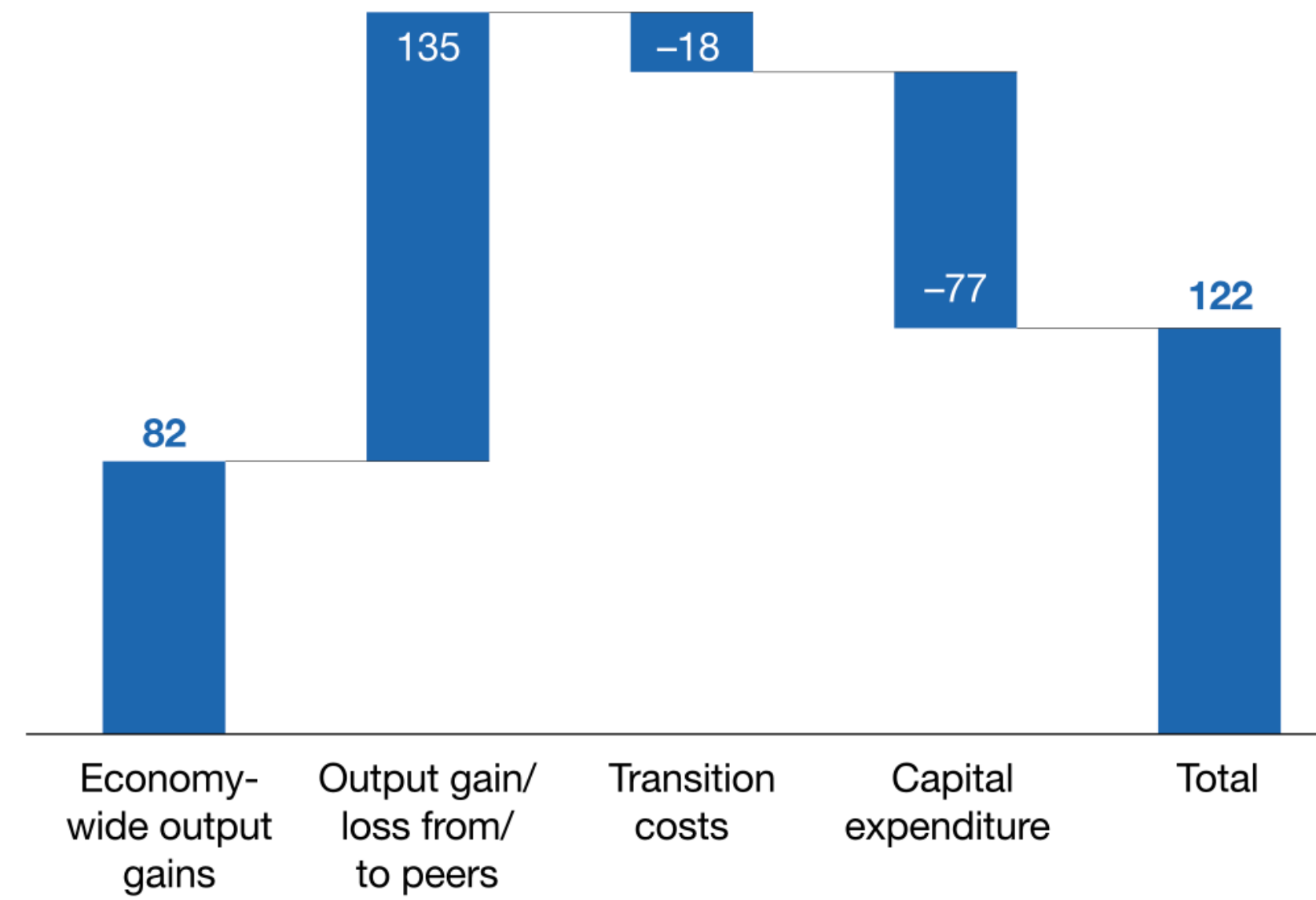
Apple struck deal with Shutterstock to license millions of images for AI training

 Benjamin Mayo | Apr 6 2024 - 7:54 am PT |  21 Comments

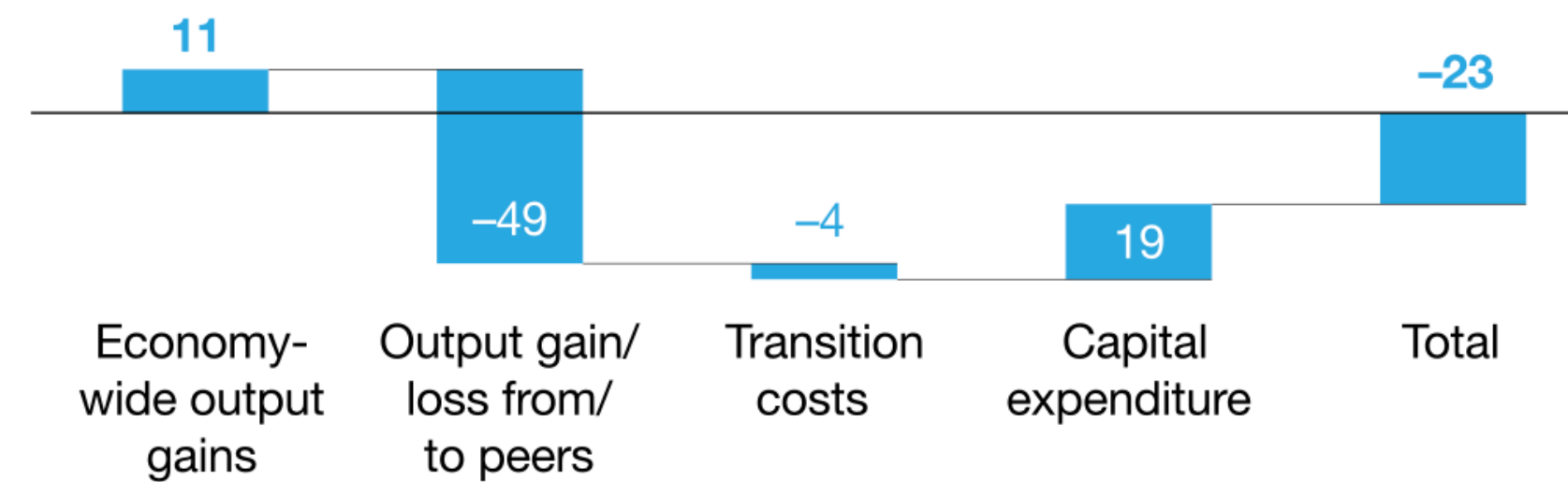
Relative changes in cash flow by AI-adoption cohort, cumulative % change per cohort



Front-runner breakdown, % change per cohort



Laggard breakdown, % change per cohort



Note: Numbers are simulated figures to provide directional perspectives rather than forecasts.

Crypto prognoze

Neparedzami procesi



Piegādes

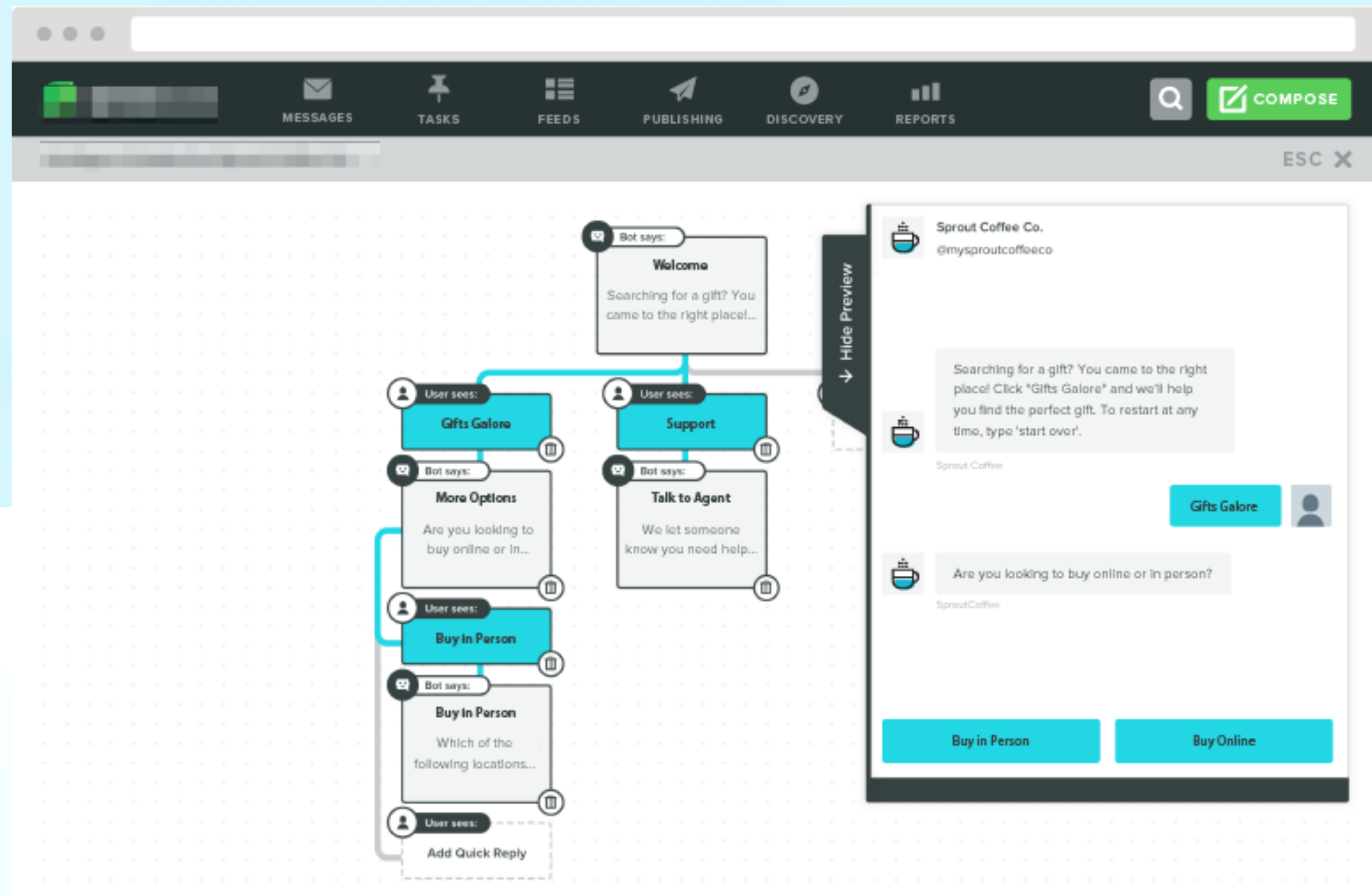
Nerentabli risinājumi



10 gadi
200m EUR

STARSHIP

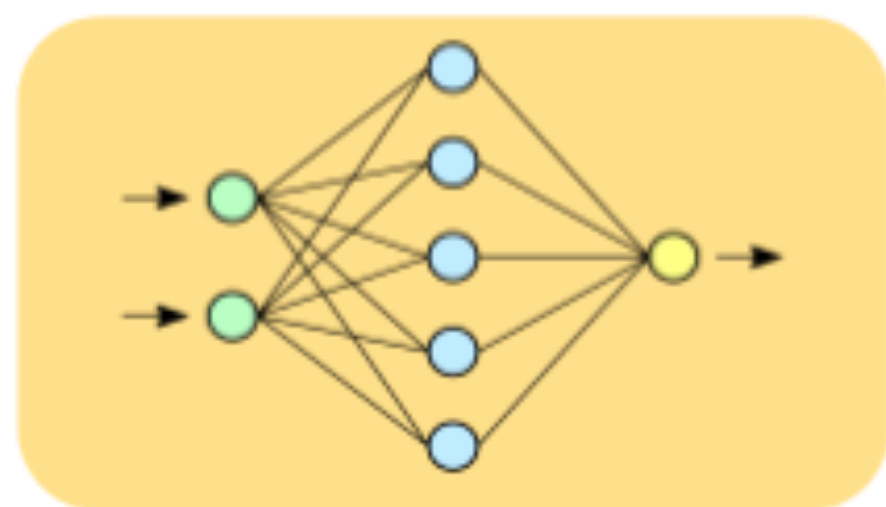
Vecie čatboti



Modeļa pielāgošana (LLM)

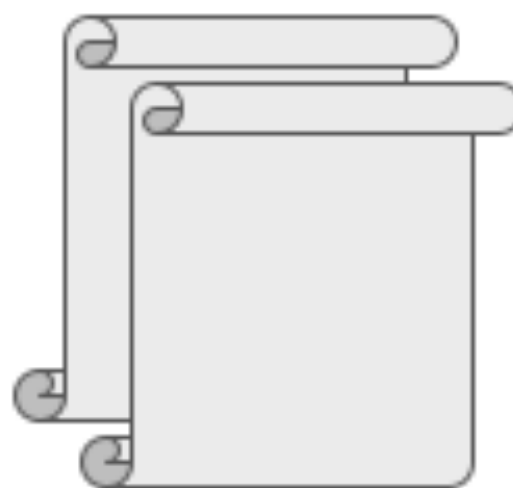
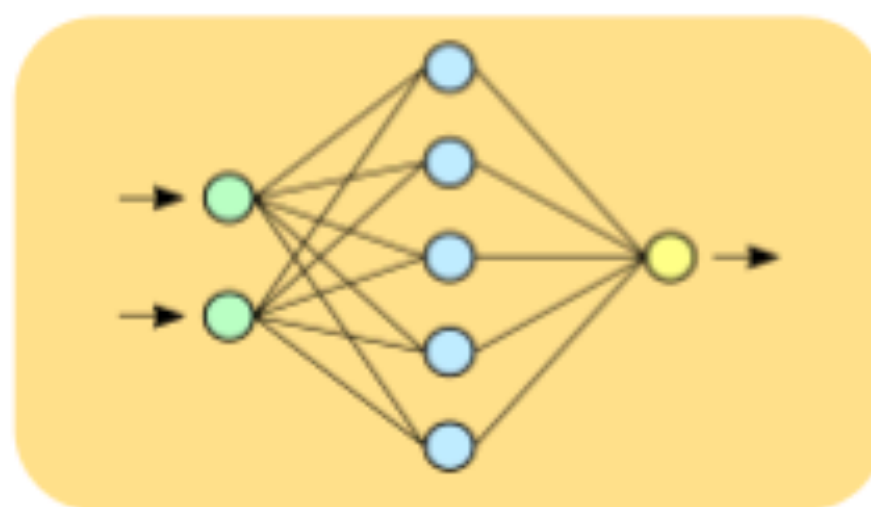


Pre-training

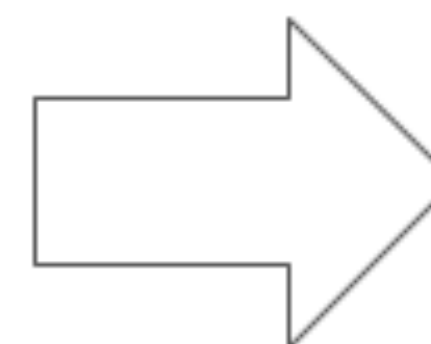
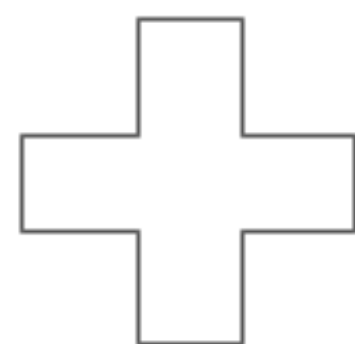


generic data

Fine-tuning



medical data



Specialized Task

Write a diagnosis
from this report:

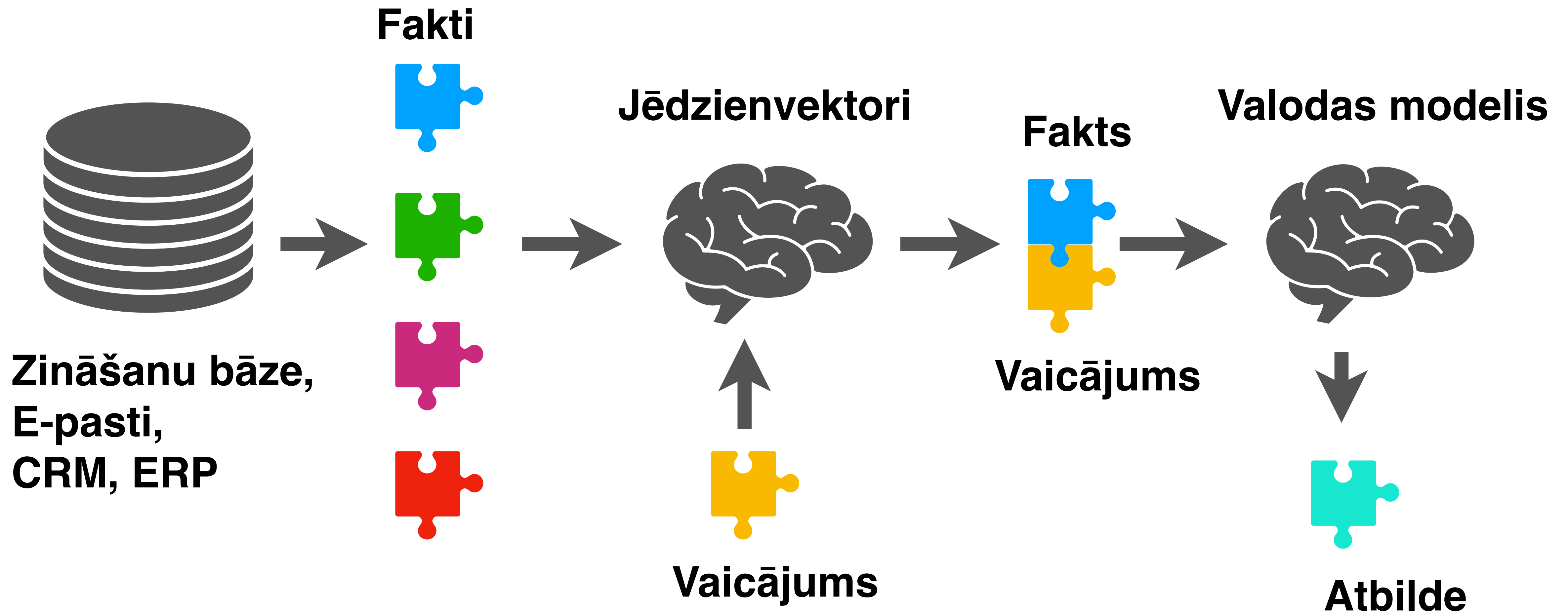


Open AI - Asistenti

The screenshot shows the OpenAI Playground interface. On the left, there are settings for the chat, including the name 'doc chat', instructions 'answer questions about employee benefits and health plans from uploaded files', and the model 'gpt-4-1106-preview'. A 'FILES' section contains several PDF documents. The main chat area shows a thread with a user query and a response from 'doc chat'. A legend in the bottom right of the chat area identifies the components: System prompt (green), Grounding files (purple), Personalization (yellow), User's query (red), and Response with citations (blue). The user's query is 'my plan is the Northwind Health Standard plan does my plan cover contact lenses and immunizations?'. The response is 'The Northwind Health Standard plan does not offer coverage for contact lenses; it only provides coverage for vision exams and glasses [15*source] . However, the Northwind Health Standard plan does include preventive care services such as physicals, immunizations, and screenings [19*source] .'. The legend indicates that the user's query is marked with a red circle (4) and the response with a blue circle (5). The instructions are marked with a green circle (1) and the files with a purple circle (2).

The screenshot shows a mobile chat interface. At the top, the time is 5:46 and the battery is at 85%. The chat is titled 'Chat' and is powered by ChatGPT. The user asks, 'What advantages does Tesla have over Chevrolet?'. The response from 'Chevrolet of Watsonville Chat Team' is: 'Tesla has several advantages over Chevrolet, particularly in the realm of electric vehicles and advanced technology. Some of these advantages include: 1. Long Range: Tesla's electric vehicles are known for their impressive driving range, allowing drivers to travel long distances on a single charge. This is a key advantage for those seeking an electric vehicle with extended range capabilities. 2. Supercharger Network: Tesla has developed a robust network of Supercharger stations, providing convenient and rapid charging for Tesla owners. This infrastructure offers widespread coverage in many regions, enabling long-distance travel'. The interface includes a 'Write a reply...' field and a 'TEXT' button.

RAG Aģenti



Aģents - Darbinieku apmācīšana



TestAssistant

Statistika Zināšanu avoti Iestatījumi Integrācijas Sarakste

Labdien esmu jūsu apmācību aģents, lūdzu atbildiet uz jautājumiem par produktu. Vai esat gatavs sākt?

Jā

Kādas ir Ulgrip™HOT karstā dzēriena sastāvā esošā PureWay-C® vitamīna priekšrocības salīdzinājumā ar parasto C vitamīnu?

Šis vitamīns ir vieglāk uzsūcams un draudzīgāks kuņģim. Pētījumi rāda, ka C vitamīns uzsūcas 2x labāk kā citu ražotāju izstrādājumi

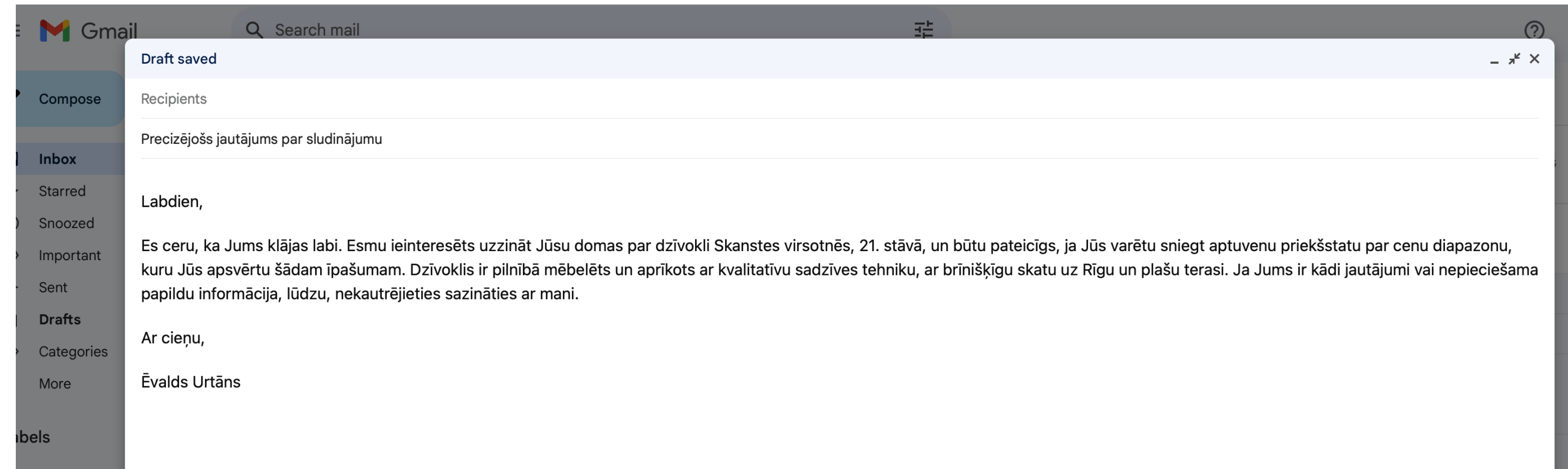
Pareizi, Pētījumi liecina, ka PureWay-C saglabājas organismā par 233% ilgāk nekā citi C vitamīna produkti. Tas arī ātrāk uzsūcas asinsritē no kuņģa-zarnu trakta un vieglāk iekļūst šūnu membrānās, pateicoties tā unikālajam lipīdu metabolītu sastāvam.

Ierakstiet jautājumu

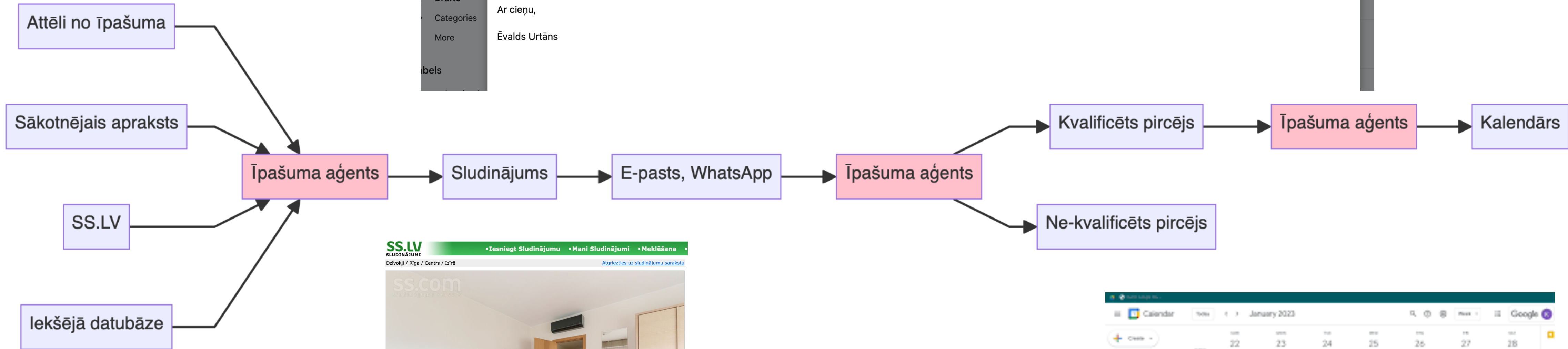
+ Jauna tēma



Aģents - Nekustamajā īpašumā



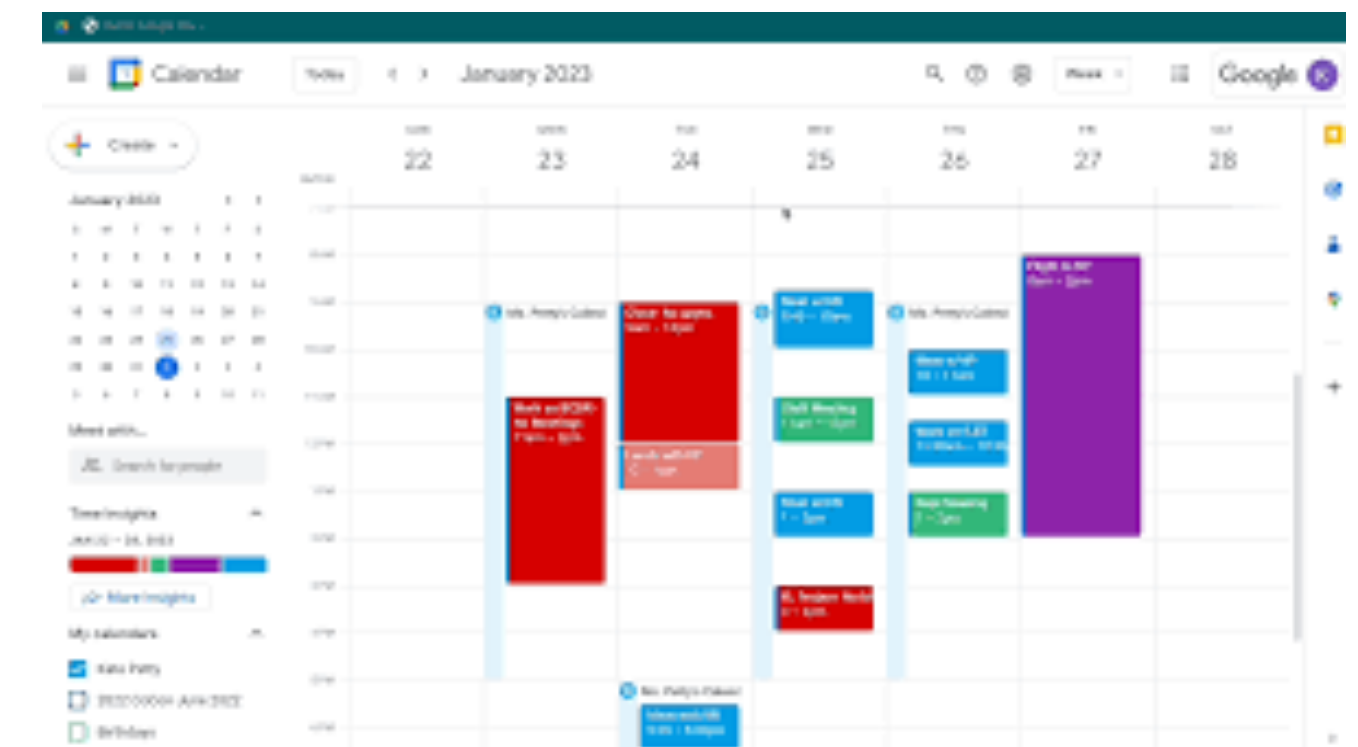
Stāvs: **21/23**
 Sērija: **Jaun.**
 Mājas tips: **Paneļu - ķieģeļu**
 Ērtības: **Lodžija, Terase, Parkc**



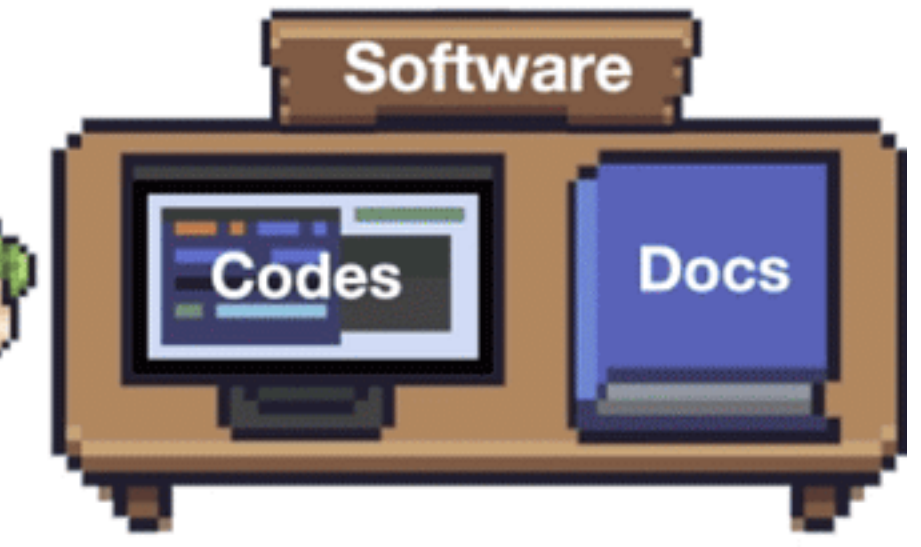
SS.LV
 SLUDINĀJUMI
 • Iesniegt sludinājumu • Mani sludinājumi • Meklēšana

Dzīvokļi / Rīga / Centrs / Izīrē [Atriesties uz sludinājumu sarakstu](#)

Dzīvoklis Skanstes virsotnes 21. stāvā.
 Izīrē pilnībā mēbelētu un ar visu nepieciešamo kvalitatīvu sadzīves tehniku aprīkotu dzīvokli ar brīnišķīgu skatu uz visu Rīgu, jo logi vērsti uz 3 debespusēm.
 Dzīvoklis sastāv no dzīvojamās daļas 129 kvm un 39 kvm terases/lodžijas ar atveikamiem logiem.
 Telpās ir 2 guļamistabas, 2 wc ar 2 dušām un 1 vannu, virtuve ar ēdamistabu, plaša viesistaba un liela terase.



Develop a Gomoku game



Youtube Podcast: AI Ranch



Mākslīgais intelekts un darbinieks – kurus darbus var nodot tehnoloģijām?

Dr. Evalds Urtans
evalds@asya.ai

